



**LCD VIDEO WALL
DISPLAY THE WAY YOU WANT**

YODA VIEWS TECHNOLOGY

ABOUT YODA

- ◆ Yoda since 2016, by virtue of years of solid operating experiences in the commercial display filed, orientate to be a high-tech enterprises and provide leading display products and solutions to global customers. We are specialized in research and development, production and customization of commercial display device as lcd video wall, bar lcd display, touch screen kiosk and interactive all-in-one monitor etc. Which are widely used in digital signage, security monitoring and rail transit etc.
- ◆ Yoda focuses on the resource integration , always effort to provide you the most satisfied products with the best and consistent quality at competitive prices and with fast and on time delivery.
- ◆ Yoda always adheres the business philosophy as “ take honestly as trader as friend with reliance” and the “mutual respect” business principles. Looking forward to have a sincere cooperation with every customer at home and aboard , targets to achieve the maximum mutual benefits.





OEM-ODM

SERVICE

Give us an idea, we will return a perfect solution!

Give us a chance, we promise you a bright future!

Good quality, right price and excellent service

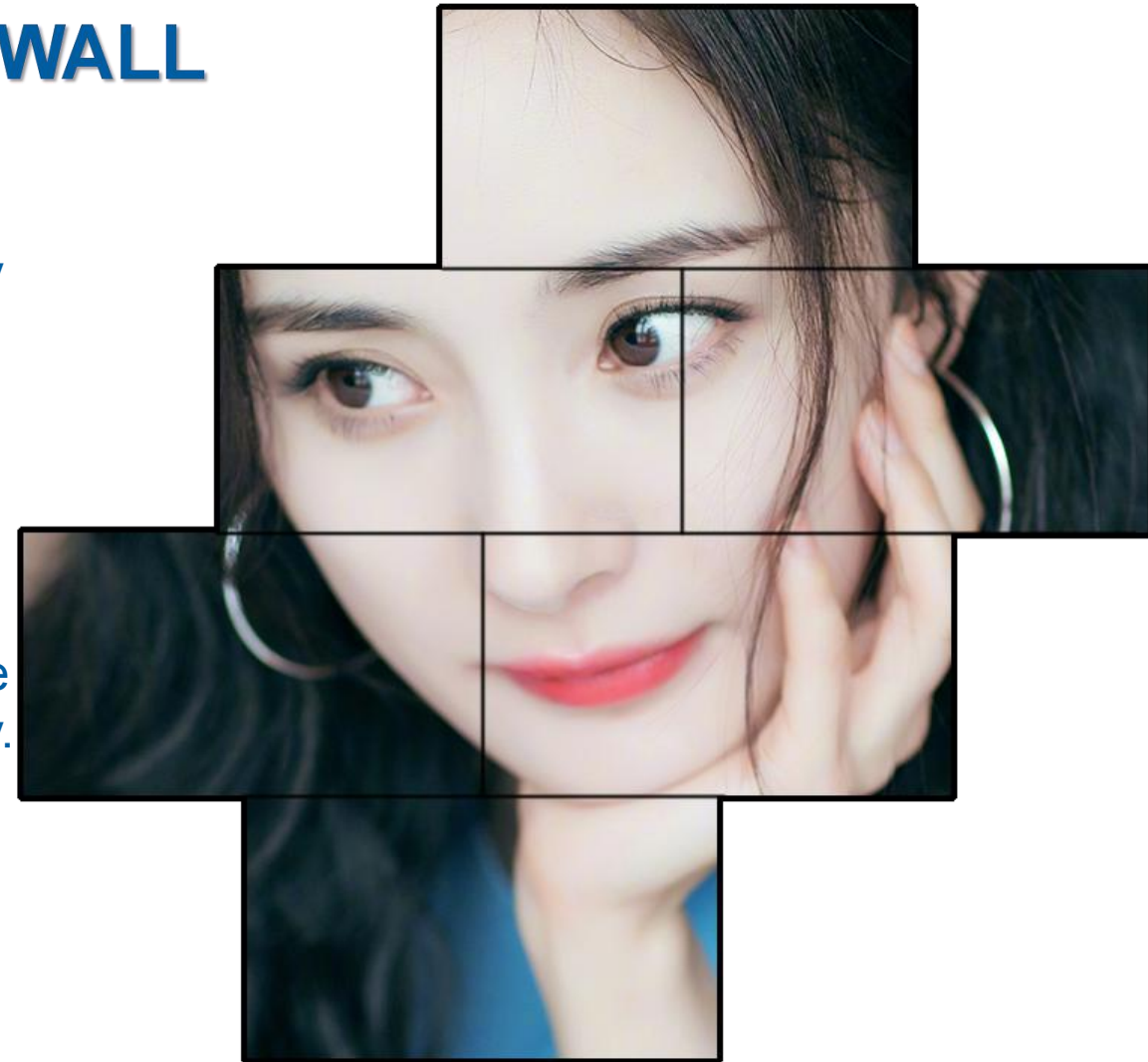
LCD VIDEO WALL

YODA LED HD LCD video walls are a popular and effective way of creatively adding large format video screens to widely used in traffic command center, security monitoring, events, conference, retail, institution, advertising media etc. which provides a large scale, high-resolution “visual canvas” for your content.

Basically the LCD Panel are with industrial grade design for 7*24hours working performance, also with LED backlight, the life is more than 50,000hours increased the greater durability.

Made up of multiple single screens, the resolution of a video wall is typically much higher than that of LED walls, because each panel is made up of a HD screen.

Depending on the screen number and mounting system selected, video walls can be built in flat, curved, or even three-dimensional shapes. They can be large enough to fill a multi-story atrium.



ADVANTAGE FEATURES

- ◆ **Low maintenance cost**
- ◆ **Flexibility and versatility**
- ◆ **Plentiful dynamic content**
- ◆ **Lower investment and quick ROI**
- ◆ **Large screen with seamless bezel**
- ◆ **Using industrial grade design LCD panel, long-life**
- ◆ **Higher resolution display with 178 ° viewing angle**
- ◆ **High pixel density - viewable from close distances without image quality loss and eye fatigue**

1920*1080,3840*2160,IPS screen,colorful display



INSTALL TYPES

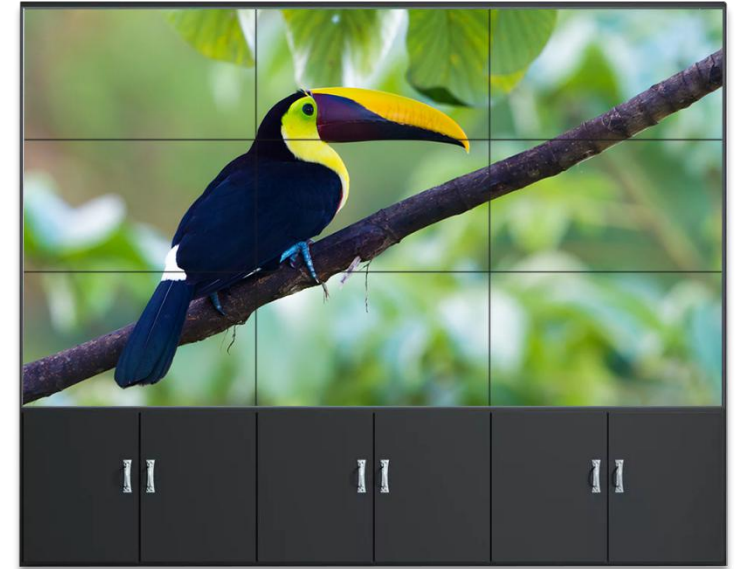
Various install types are available to meet your individual demand



◆ Front maintenance installation



◆ Wall mount installation



◆ Cabinet installation

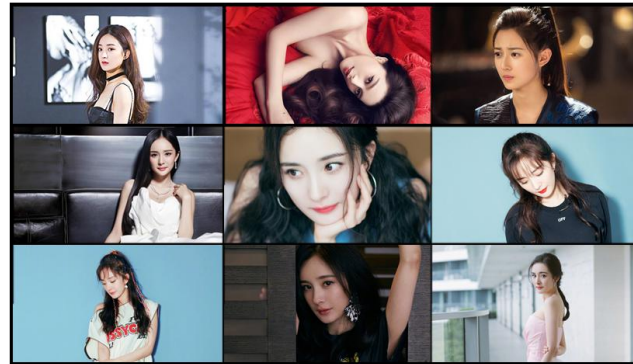
INTELLIGENT SPLIT SCREEN

Screen intelligent splicing single screen arbitrary combination



◆ **WHOLE SCREEN DISPLAY**

All cells are synthesized together to show



◆ **SINGLE SCREEN DISPLAY**

Each unit can display the picture independently



◆ **MOVE PICTURE**

The cell be pulled up the full screen picture



◆ **PICTURE IN PICTURE DISPLAY**

Displayed in the picture which can display pictures



◆ **IMAGE OVERLAY**

Superimposed on screen another picture



◆ **IMAGE ROAMING**

Arbitrary movement of a single signal

PRODUCT PARAMETERS

Energy saving and environmental protection, long use life!

Brand	Size	Model	Bezel	Resolution	Brightness	Active Area(mm)	Dimension(mm)
YODA	46"	Y46LVW-P01	3.5mm	1920*1080	500cd/m ²	1018.08*572.67	1022*576.6*102.9
	46"	Y46LVW-P03	1.7mm	1920*1080	500cd/m ²	1018.08*572.67	1022*576.6*102.9
	46"	Y46LVW-P02	0.88mm	1920*1080	500cd/m ²	1018.08*572.67	1022*576.6*102.9
	49"	Y49LVW-P01	3.5mm	1920*1080	500/700cd/m ²	1074.10*604.26	1078.3*608.4*97.3
	55"	Y55LVW-P01	3.5mm	1920*1080	500/800cd/m ²	1209.60*680.40	1213.7*684.5*100
	55"	Y55LVW-P03	1.8mm	1920*1080	500/700cd/m ²	1209.60*680.40	1211.4*682.2*98.1
	55"	Y55LVW-P02	0.88mm	1920*1080	500/700cd/m ²	1209.6*680.40	1211*681.8*99.2
	65"	Y65LVW-P01	3.5mm	3840*2160	500cd/m ²	1428.48*803.52	1432.6*807.6*115.1
	75"	Y75LVW-P01	3.5mm	3840*2160	500cd/m ²	1649.66*927.93	1658.76*940.04*120.15



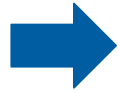
- ◆ Support 7*24 hours boot-up
- ◆ Support 4K UHD resolution
- ◆ Screen size:46" 49 55" 65" 75"

OPTIONAL ACCESSORIES

Standard and professional accessories are available for option



◆ Front maintenance hydraulic bracket



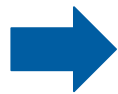
◆ Pothook



◆ Power cord



◆ USB serial cable



◆ Cable of RS232



◆ Cable for HDMI/DVI/VGA



◆ Remote control

VARIOUS CABLE INTRODUCTION



VGA Cable



HDMI Cable



DVI Cable



AV Cable



RS232 Network Cable



USB Serial Cable

EXTERNAL DEVICES FOR VIDEO PROCESSING



DISTRIBUTOR



MATRIX

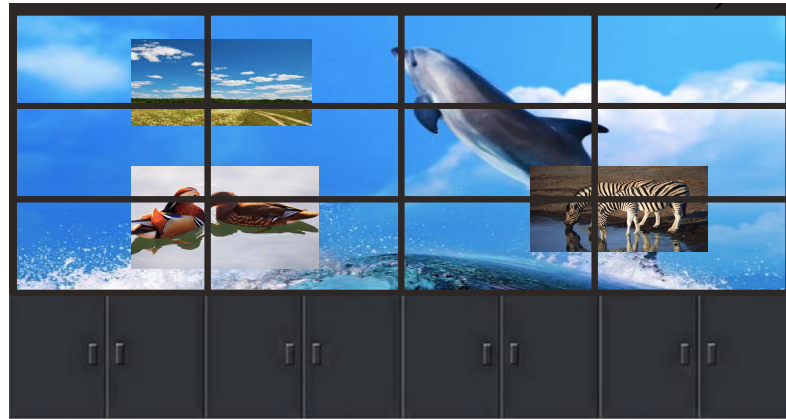


EXTERNAL STITCHING PROCESSOR
(STITCHING CONTROL)



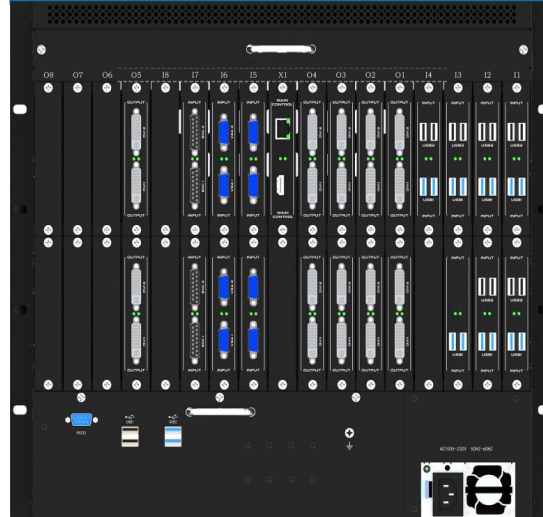
DECODING PROCESSOR

VIDEO DISPLAY SYSTEM



LCD VIDEO WALL

MULTISCREEN
SPLICING PROCESSOR



VIDEO MATRIX



VIDEO SPLITTER

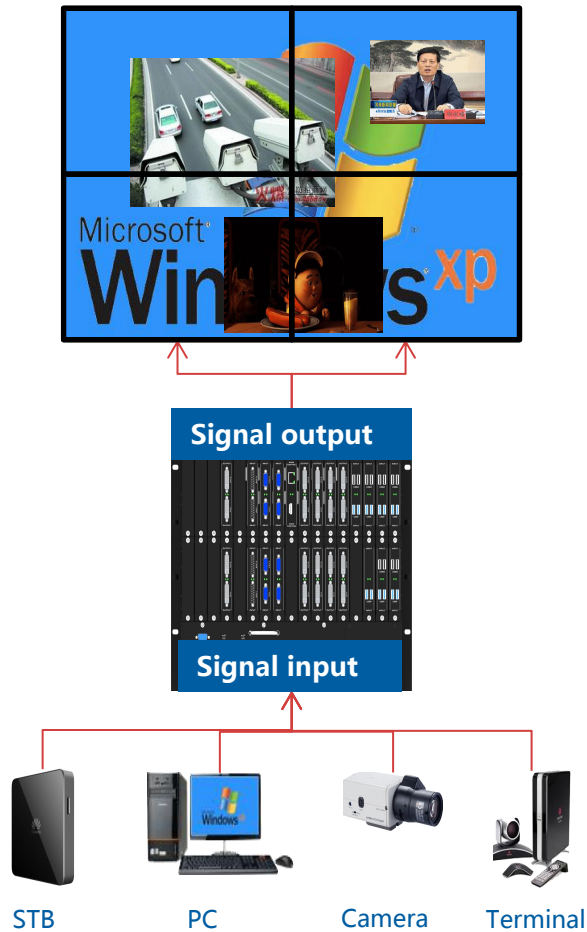


VIDEO SIGNAL SOURCE

VIDEO DISPLAY SYSTEM

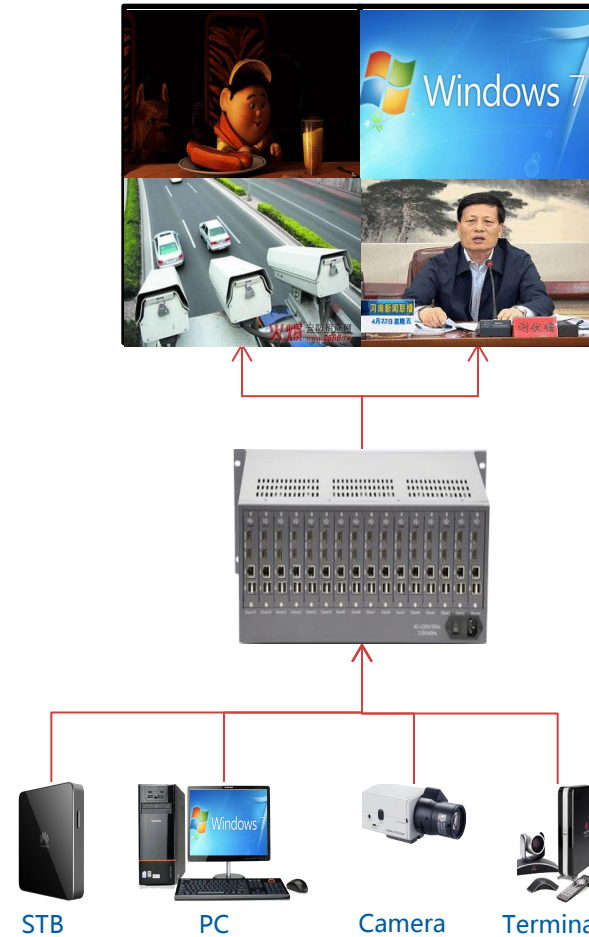
MULTI-SCREEN VIDEO PROCESSOR

Works to realize different pixels of image in the large screen to open any display window, as zoom in or out the image, image overlay, picture in picture display, move picture or image roaming.



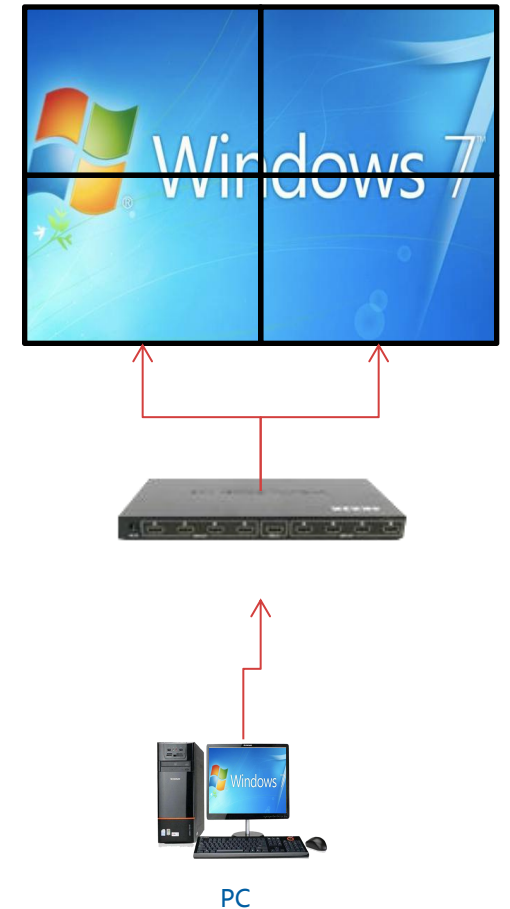
VIDEO MATRIX

Works as single screen display, only can pin a video or image on the single screen to achieve one-to-one display



VIDEO SPLITTER

Works to make all cells are synthesized together to show as a whole image



APPLICATION FIELD

Four Markets Eight Industries



◆ Entertainment



◆ Marketing Center



◆ Retail



◆ Public Display



◆ Commercial Advertising



◆ Conference



◆ Security Monitoring



◆ Touch Interaction

SOLUTION FOR COMMERCIAL & RETAIL



Vertical screen

Distributor



Information Delivery



- ◆ The splicing screen of one signal adopts distributor
- ◆ Rotate the image 90 degrees with the playback box
- ◆ Combined with stand-alone player software, it can play on U disk
- ◆ Combined with network release software, it can be released by mobile phone
- ◆ The resolution is 1920 * 1080
- ◆ Advantages: low cost
- ◆ Disadvantages: stretch deformation, complicated installation
- ◆ Suitable for customer group: price sensitive, no requirement for display effect

SOLUTION FOR COMMERCIAL & RETAIL



Horizontal screen

Distributor



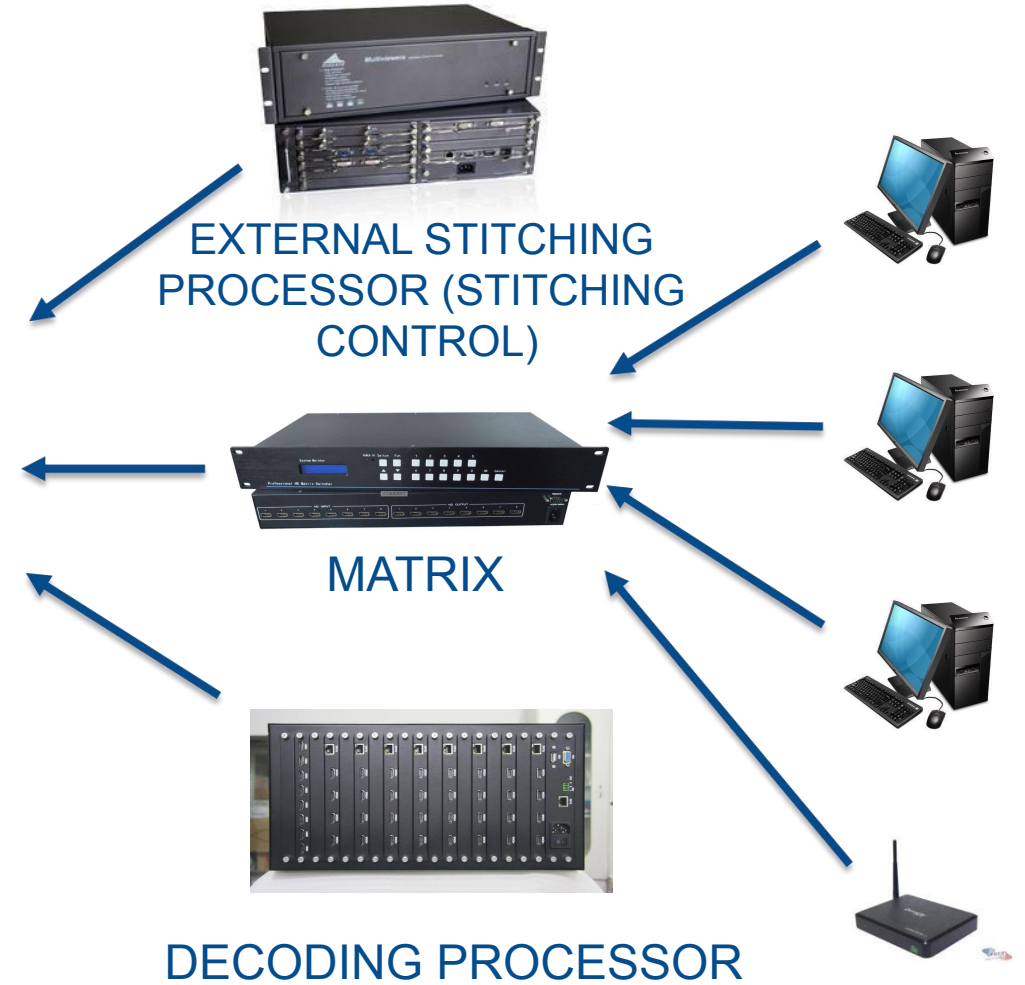
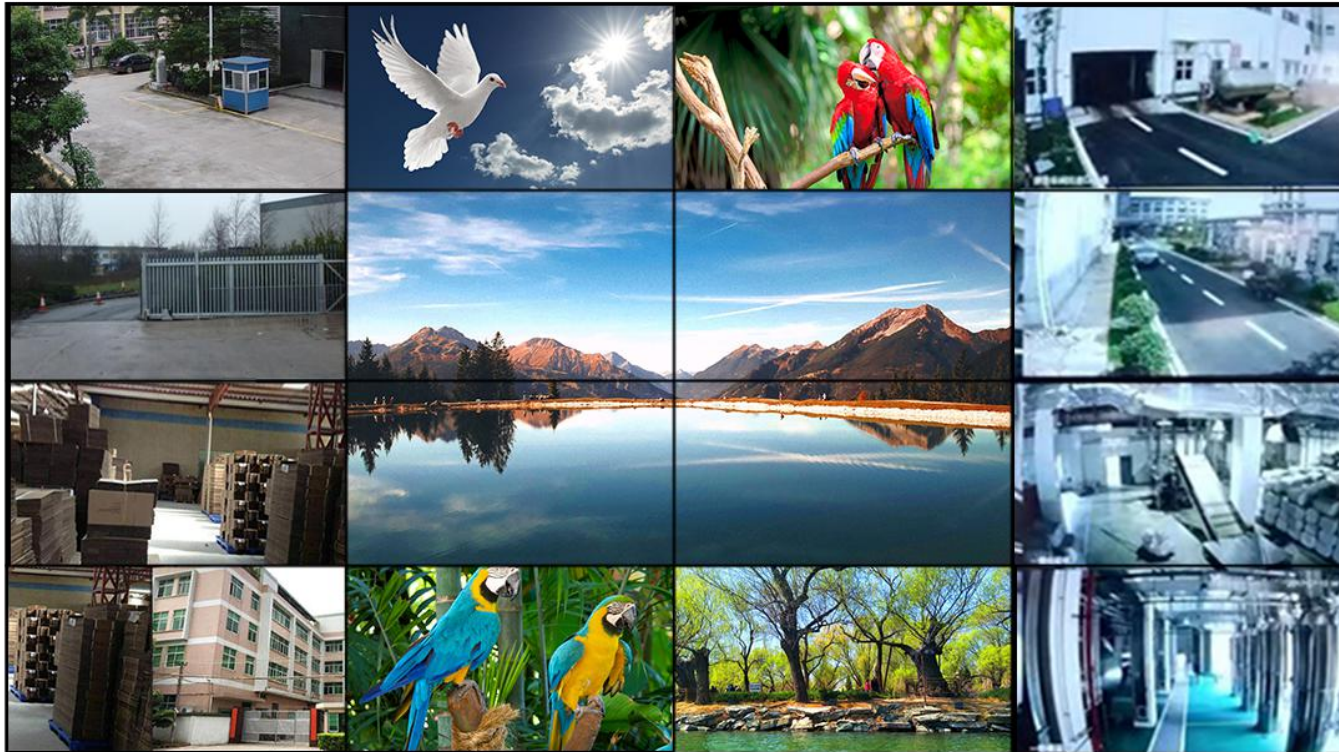
Information Delivery



- ◆ The splicing screen on one signal adopts distributor
- ◆ It can be played by USB flash drive in combination with stand-alone playing software
- ◆ It can be released by mobile phone in combination with network publishing software
- ◆ The resolution is 1920*1080.
- ◆ Advantages: low cost.
- ◆ Disadvantages: stretching deformation, cumbersome installation.
- ◆ Suitable for customer groups: sensitive to price, no requirement for display effect.

SOLUTION FOR MONITORING CENTER

The best choice for multi -channel signal input applications



THE EVOLUTION PROCESS OF CCTV MONITOR

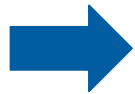
Lcd video wall support splicing screen display, each screen separate display

One image, most suitable for security monitoring,

Support multichannel signal input



◆ Desktop Monitor



◆ LCD Monitor



◆ Video Wall Monitor



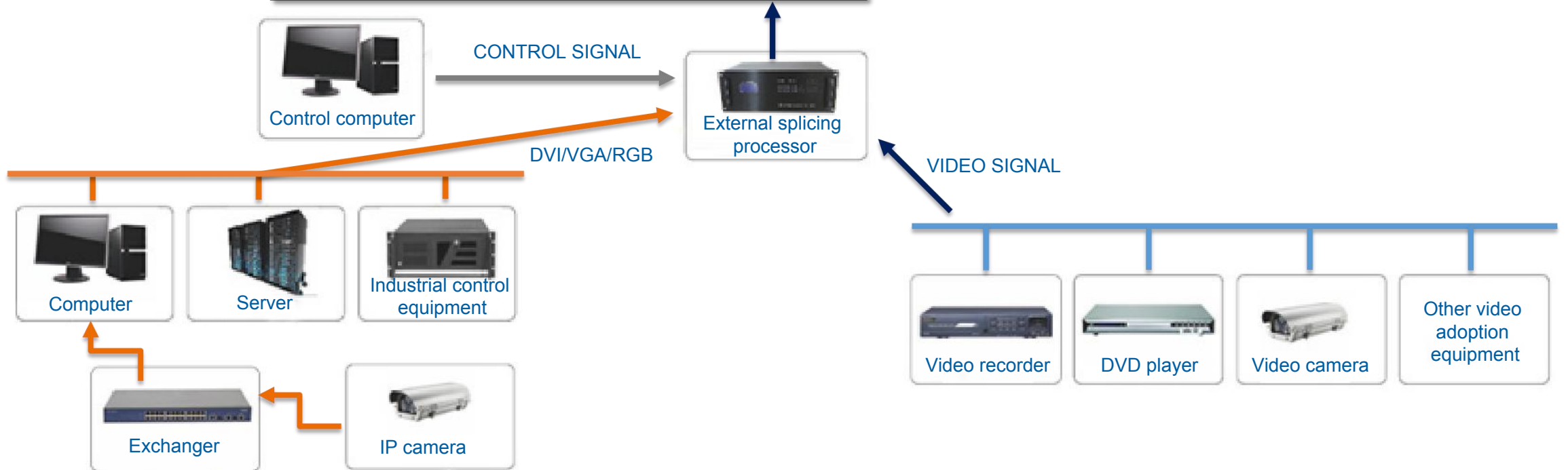
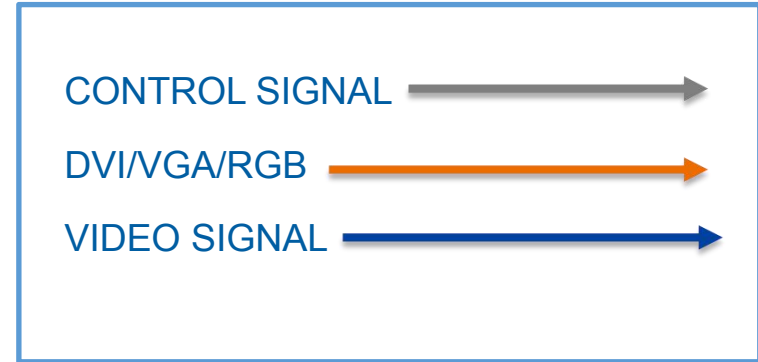
- **LCD VIDEO WALL**

THE NOW AND FUTURE

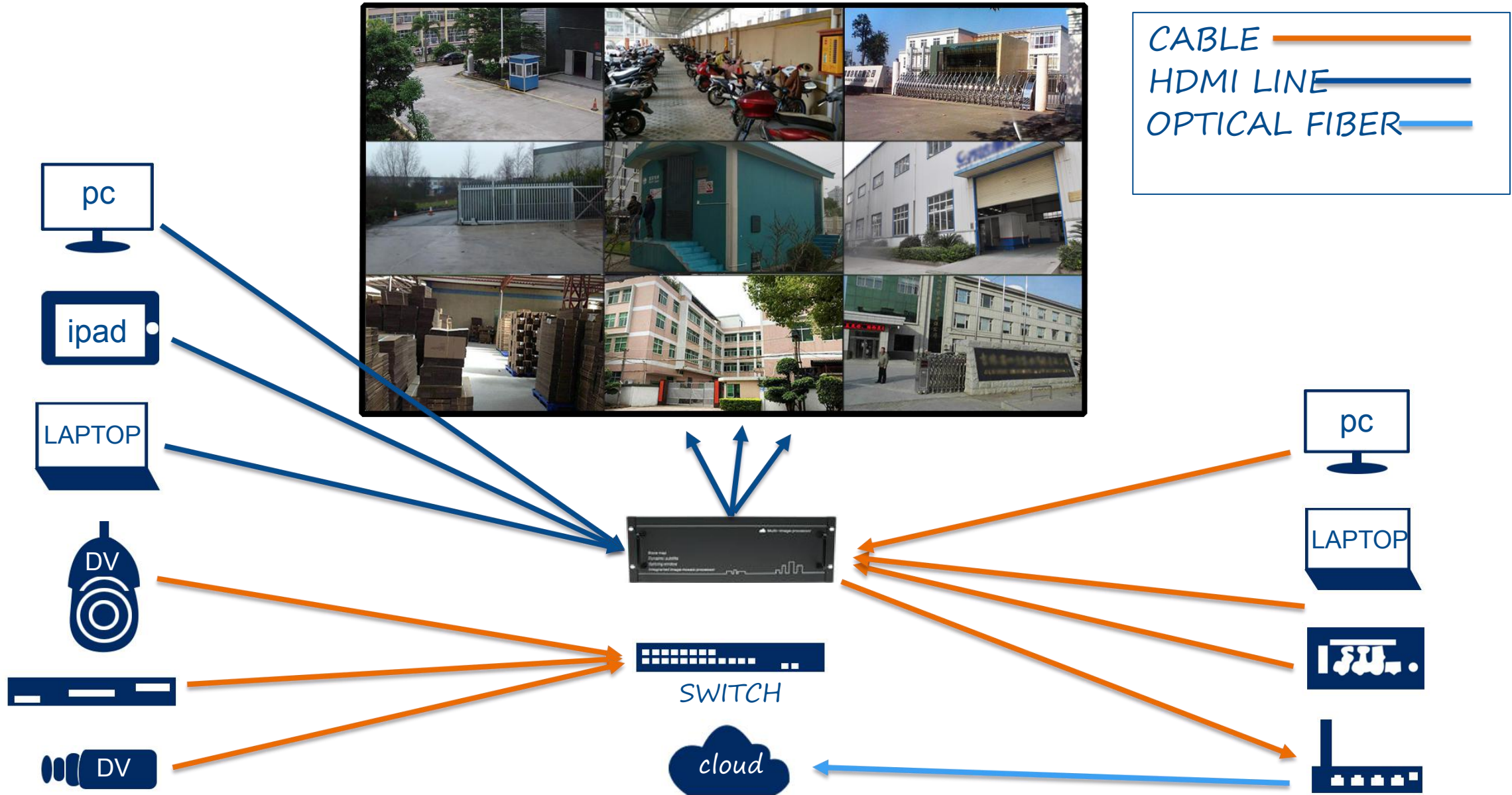
THE BEST CHOICE

FOR SMART CONTROL ROOM

MONITORING CENTER TOPOLOGY DIAGRAM

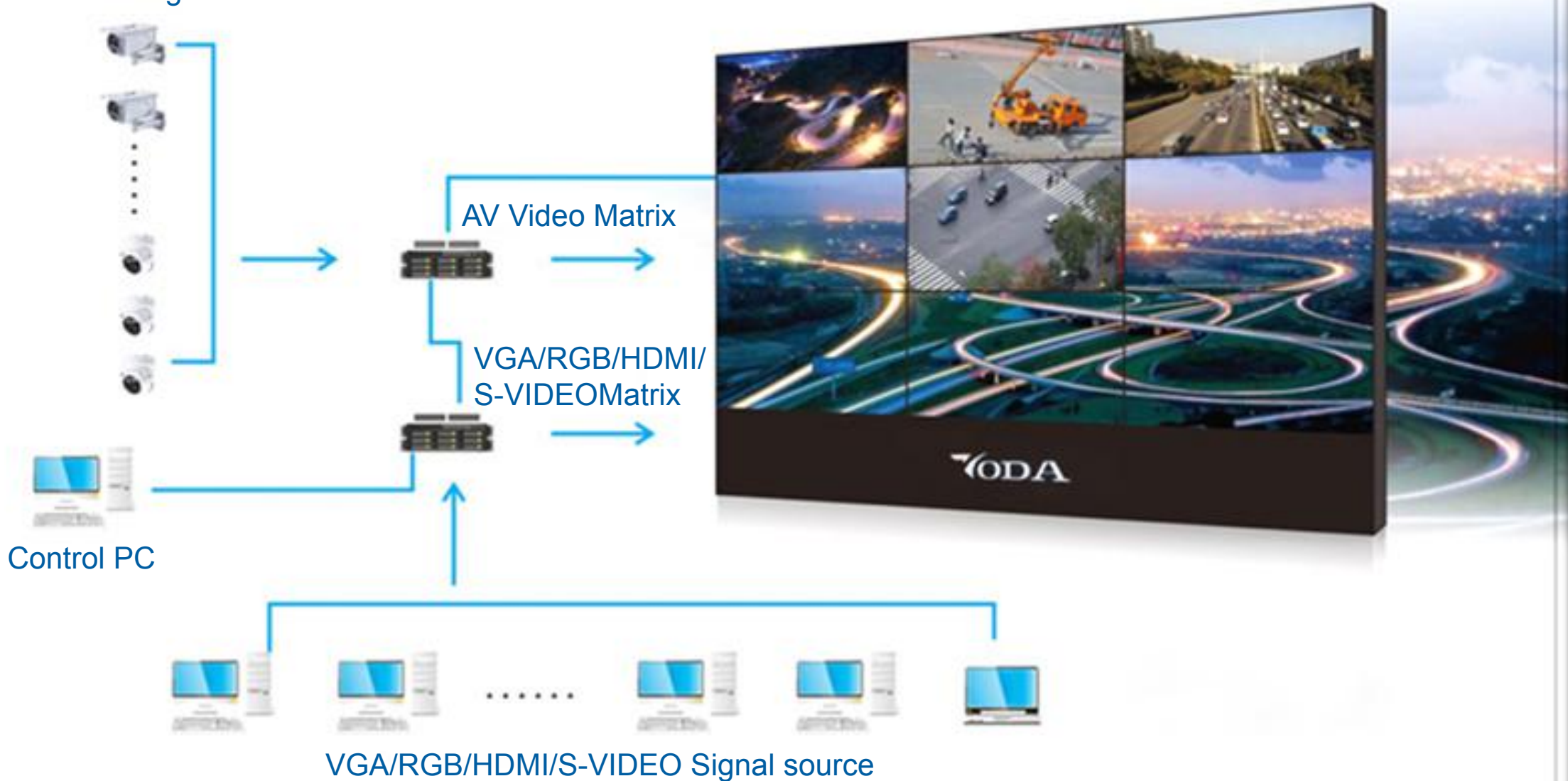


MONITORING CENTER TOPOLOGY DIAGRAM

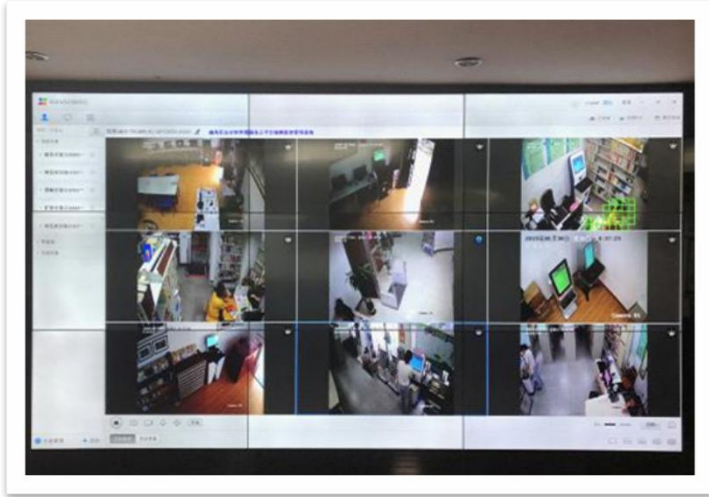


SECURITY MONITORING SYSTEM DIAGRAM

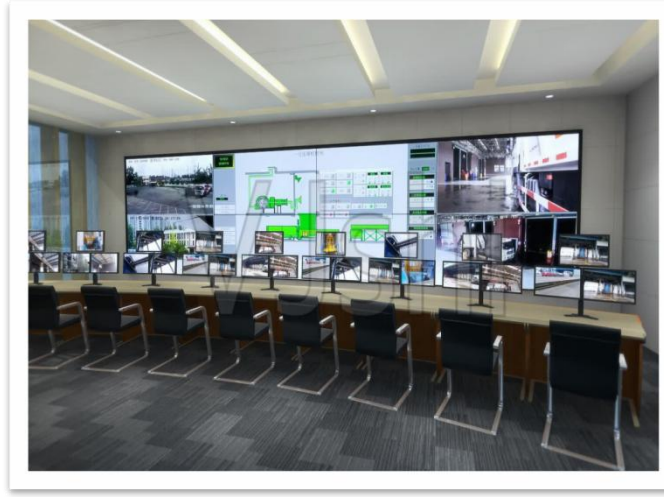
Front av signal source



SECURITY MONITORING CLASSIC CASES



Library



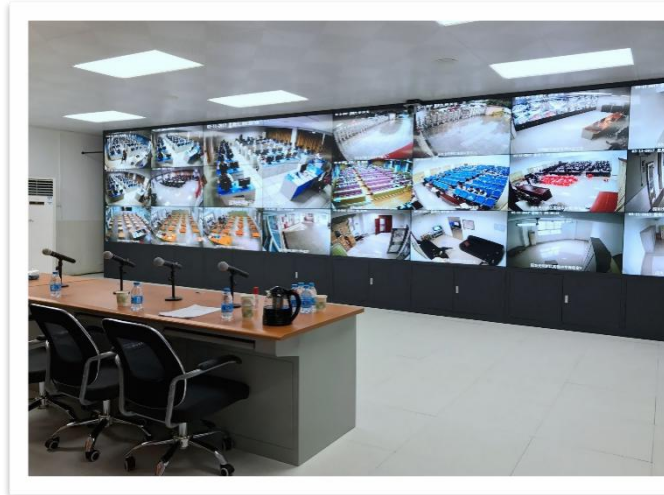
Enterprise control room



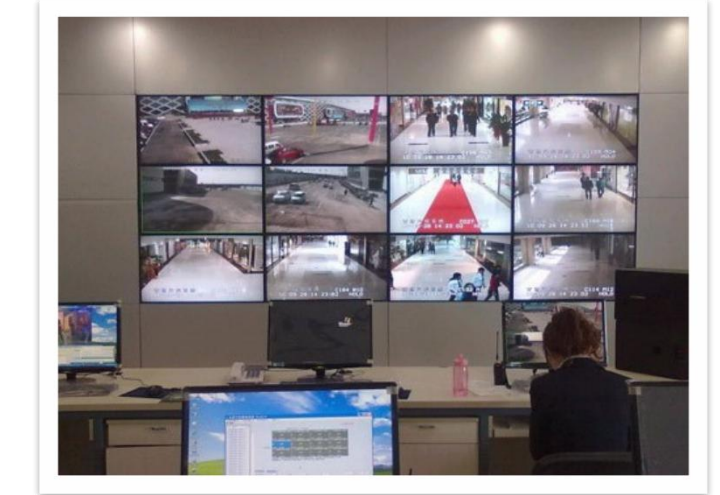
School control room



Coal and electricity group



College entrance examination



Security control room

SECURITY MONITORING CLASSIC CASES

