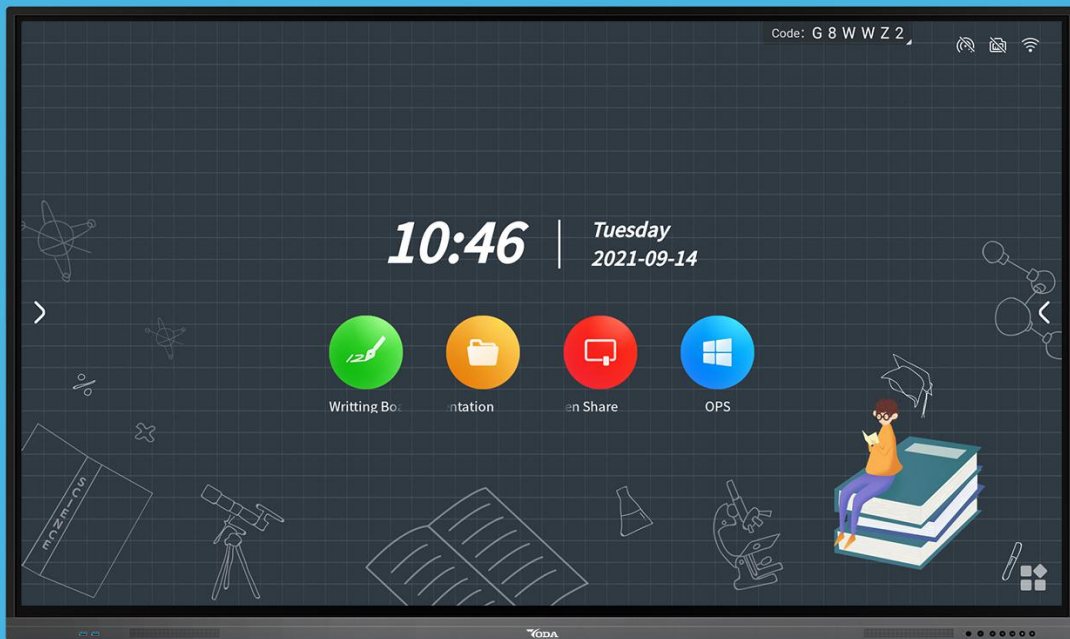


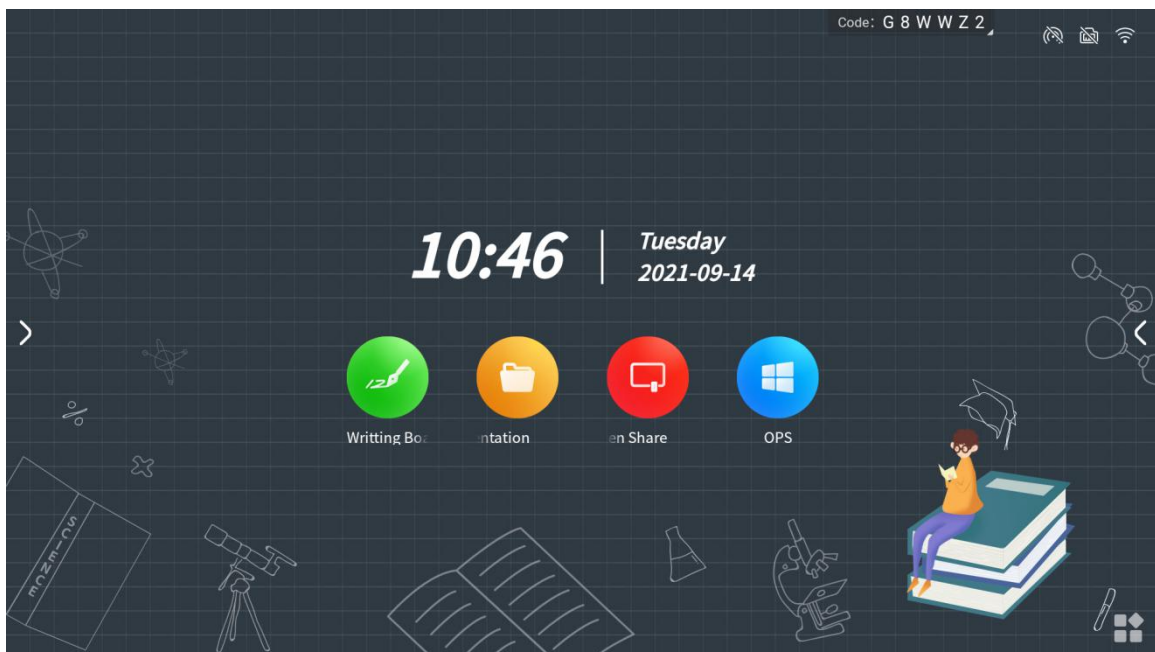
# Multimedia Interactive

## All-in-one Machine User Manual





1. Desktop.....	2
2. Whiteboard writing.....	2
A. Create content.....	3
B. Share content.....	4
C. File function.....	4
3. Annotation.....	8
4. Wireless screen transmission.....	9
5. Presentation.....	15
6. Small tools.....	16
7. Welcome speech.....	29
8. Video booth.....	32

## 1. Desktop



### ●Content description

- ①Status Bar Icon : Hot spot、 Cable network、 WIFI ; Shown as : "  "
- ②Main desktop: Whiteboard, document presentation, Screenshare, OPS
- ③More applications: 

## 2. Whiteboard

### ●What is a whiteboard?

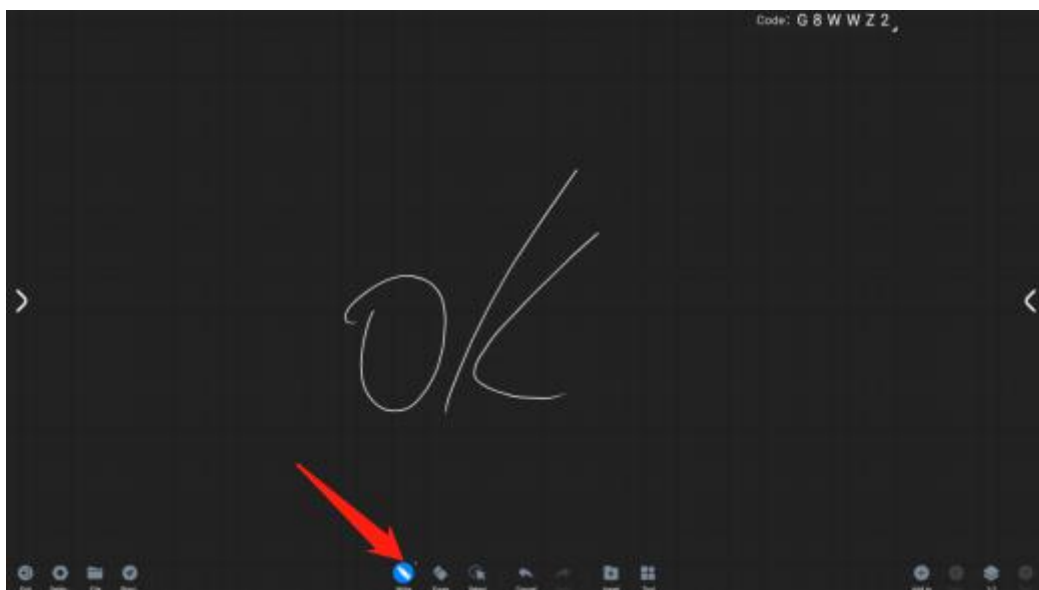
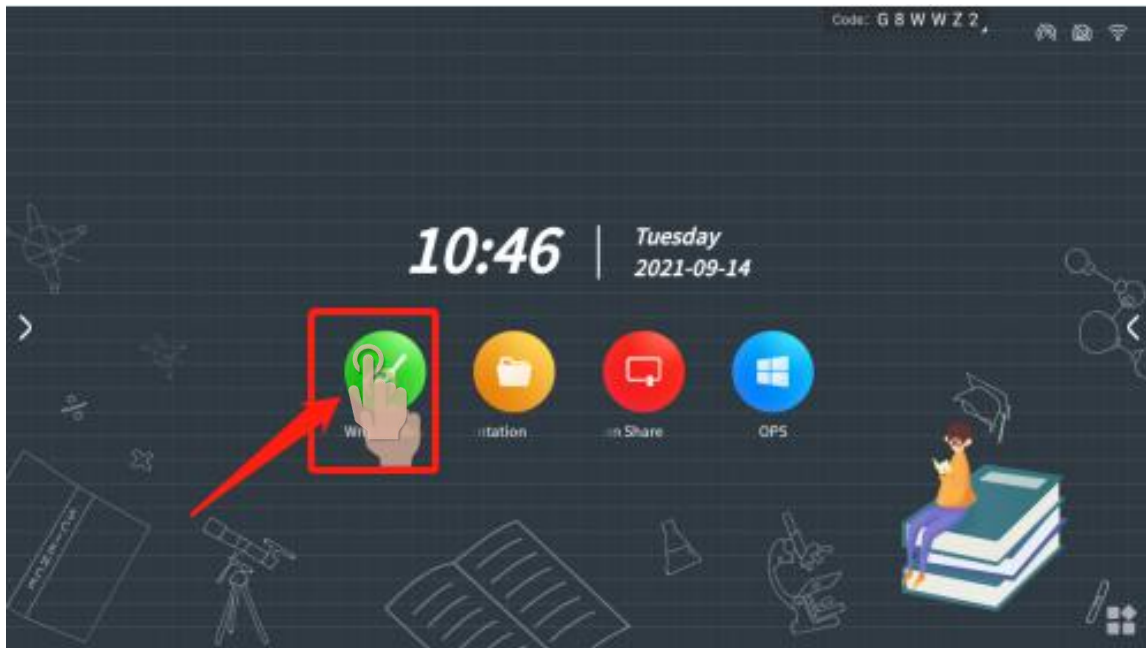
Whiteboard is a multi-functional writing application that helps users communicate and connect efficiently, brings a relaxed and fun experience, and improves team efficiency. You

can click on the "Whiteboard" application icon on the homepage. After the meeting, you can scan the code to take away the contents of the whiteboard ,the focus of the meeting is no longer missed.

## A. Create content

- Open whiteboard

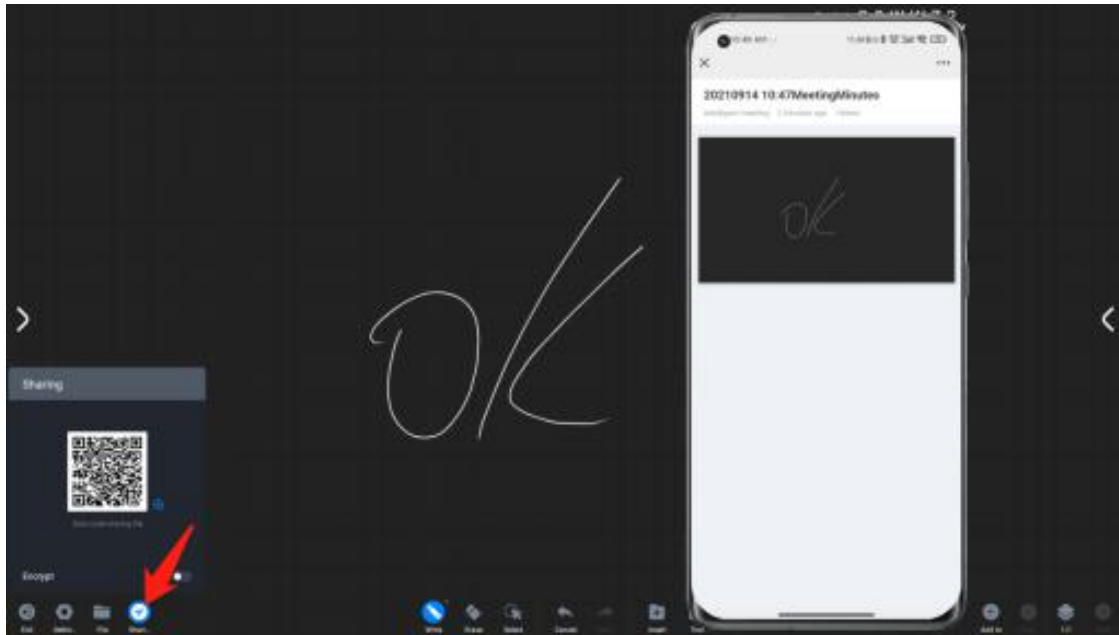
Click "Whiteboard" icon from the homepage to open the whiteboard application.



## B. Share content

- Scan code to share

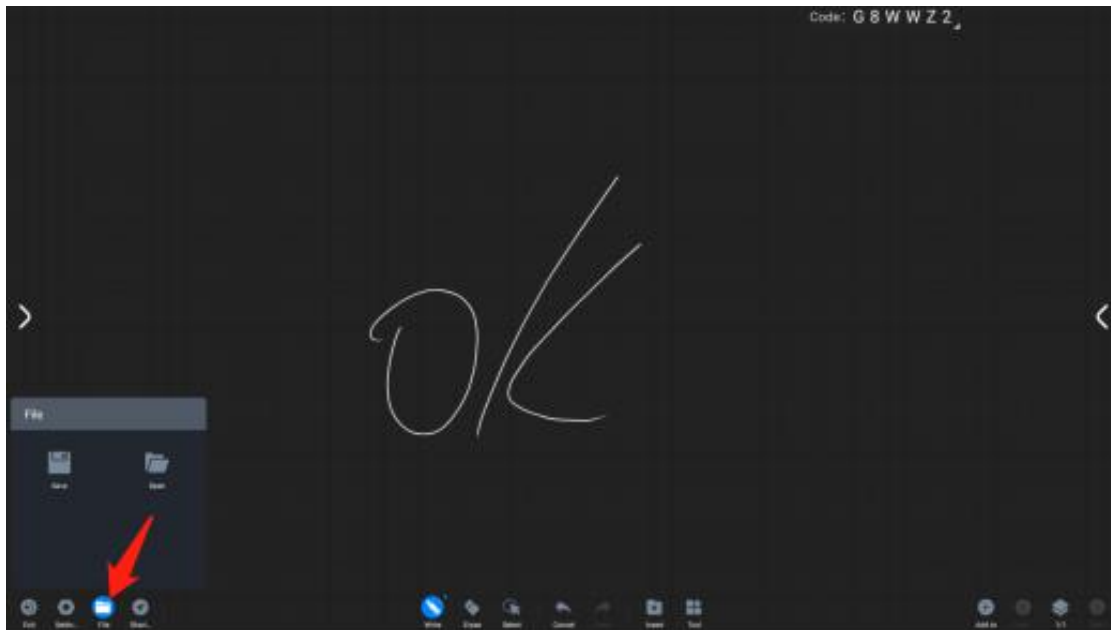
Scan the code and take it away: Click the "Share" button in the lower left toolbar, and the QR code sharing page will pop up. According to the text prompt, scan the QR code with your mobile phone to access the file link and save the file.



## C. File function

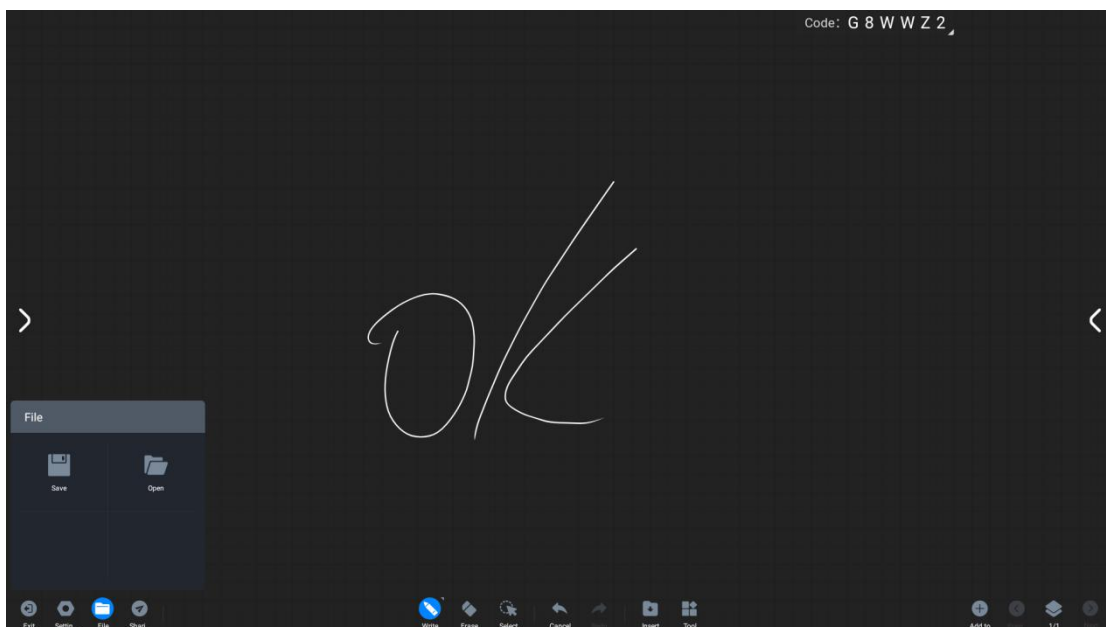
- File open

Click the "File" button in the lower left toolbar to pop up the file operation page. According to the text prompt, you can open the folder of the large board to select the whiteboard file that needs to be opened. The whiteboard file has the standard file format MHB.



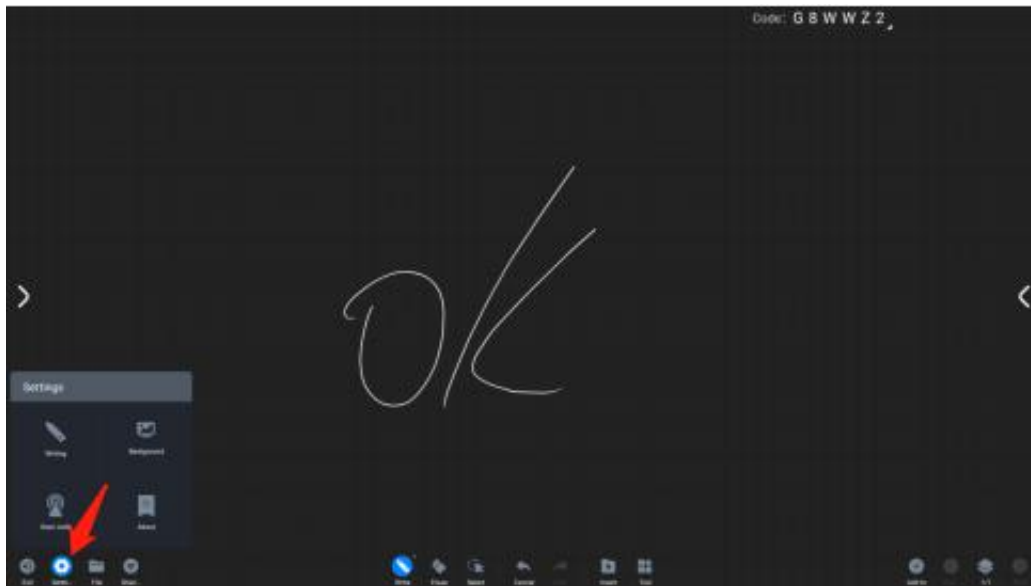
### ● File save

Click the "File" button in the lower left toolbar to pop up the file operation page, and save the content of the whiteboard according to the prompts of the copywriting. Is the package storage path selectable for local storage on the large board or imported into a USB peripheral device. The save format can be MHB, PDF and JPG.



### ● Whiteboard settings

Click the "Settings" button in the lower left toolbar to pop up the whiteboard setting operation interface

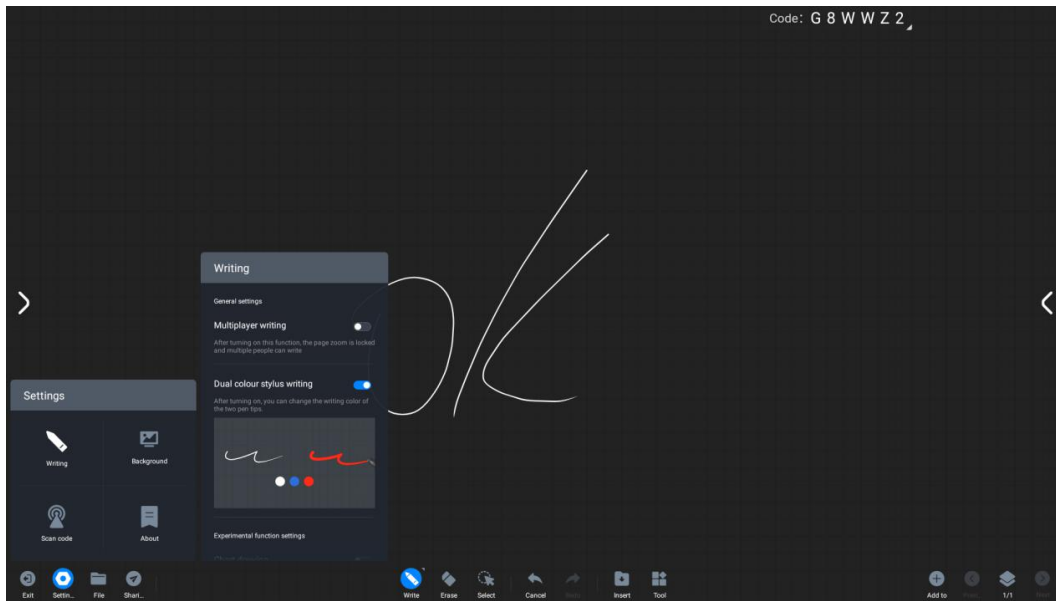


**Writing settings:** Click "writing settings" to turn on/off settings for pen tip writing, chart drawing, and two-color pen functions.

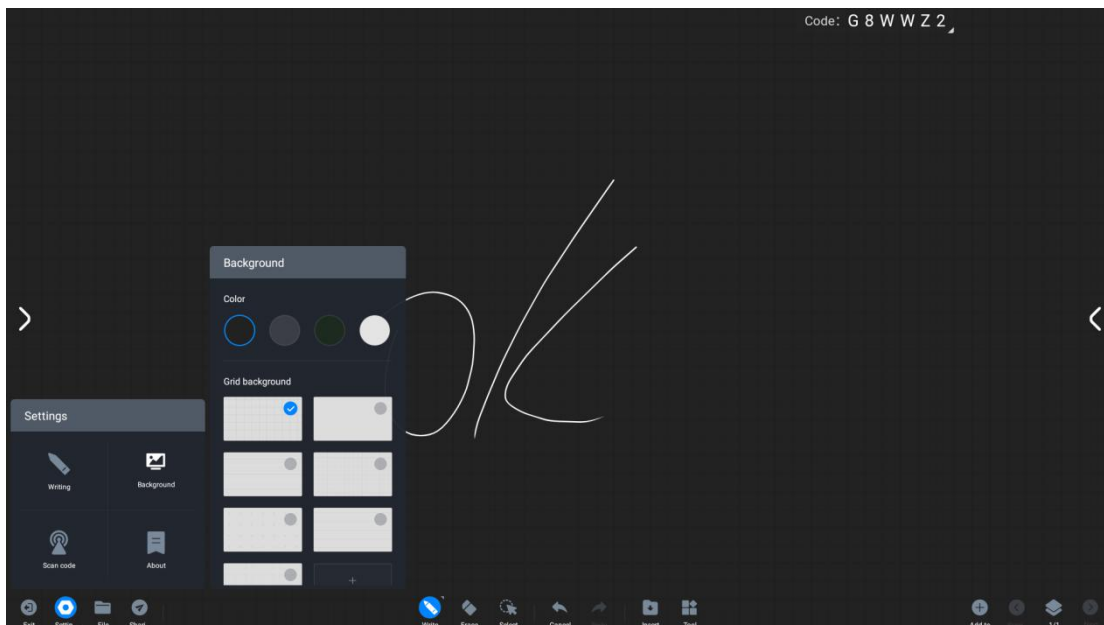
**Multi-person writing:** Open it to write in multiple people at the same time under the whiteboard.

**Chart drawing:** Turn on the switch to realize automatic recognition of writing graphics. It is closed by default, and the default options are restored after restarting.

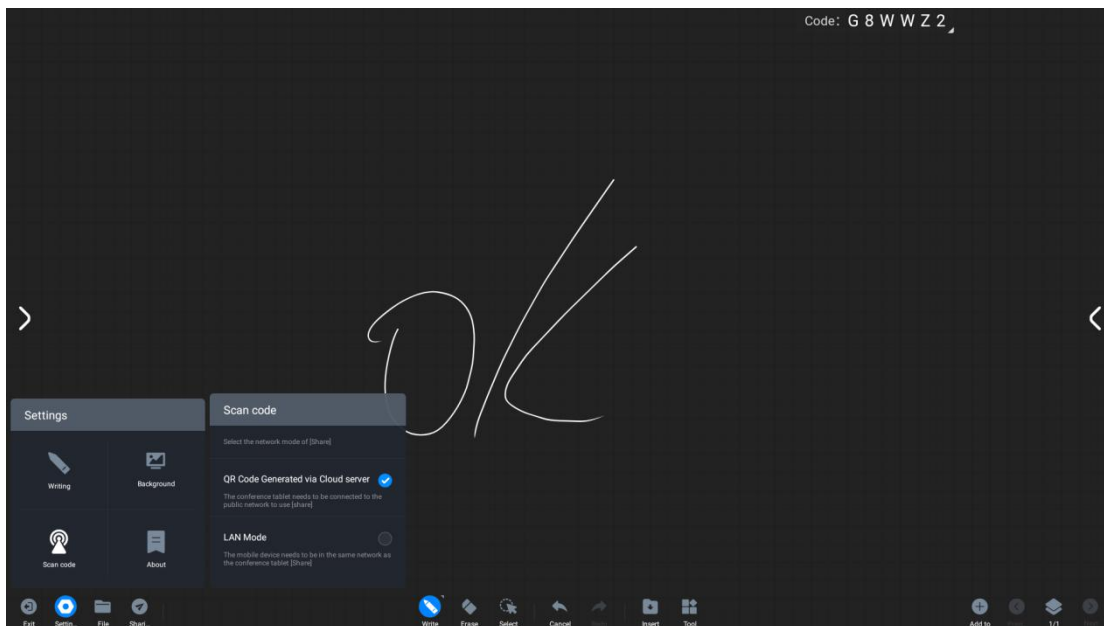
**Two-color pen writing:** In the case of infrared touch screen, the two-color pen function can be used to define the color of the pen tip and finger by turning on the switch of the two-color pen.



**Writing background:** Click "writing background" to choose different writing backgrounds.



**Scan code network:** Click "Scan code network" to change the QR code sharing network conditions: Public network mode: Both mobile phones and the interactive flat panel need to be connected to the Internet to obtain the sharing link. Local area network mode: The mobile phone and the interactive flat panel need to be connected to the same local area network to obtain the sharing link.



### About:

View the current whiteboard version number

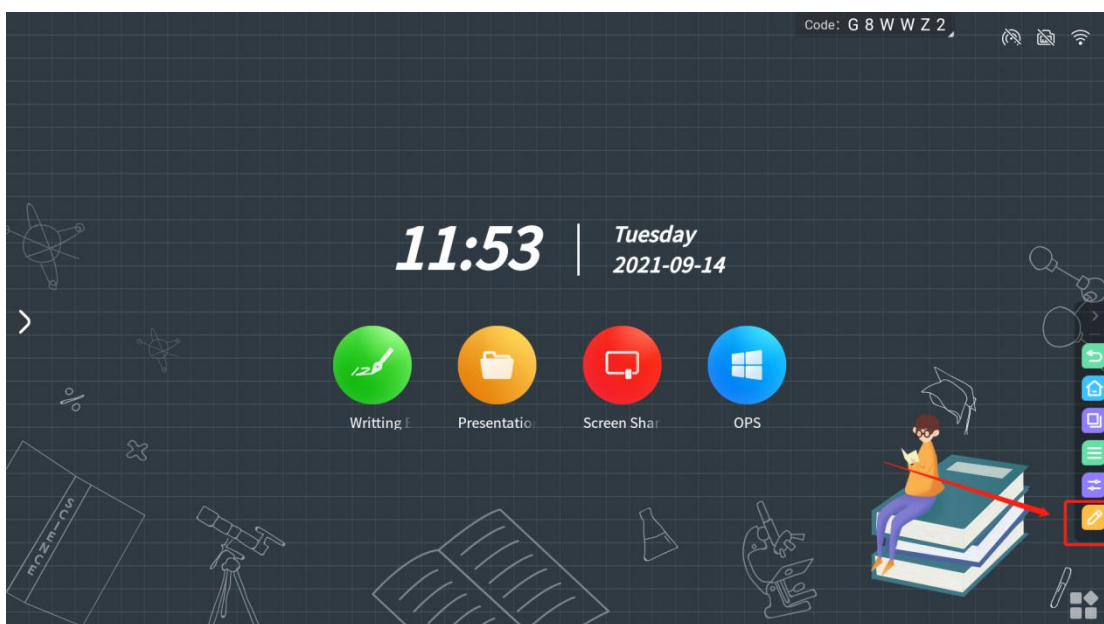
View open source license

View version updates

### 3. Annotation

#### ●What is a comment?

The annotation function allows users to write content in the current screen and make information annotations.





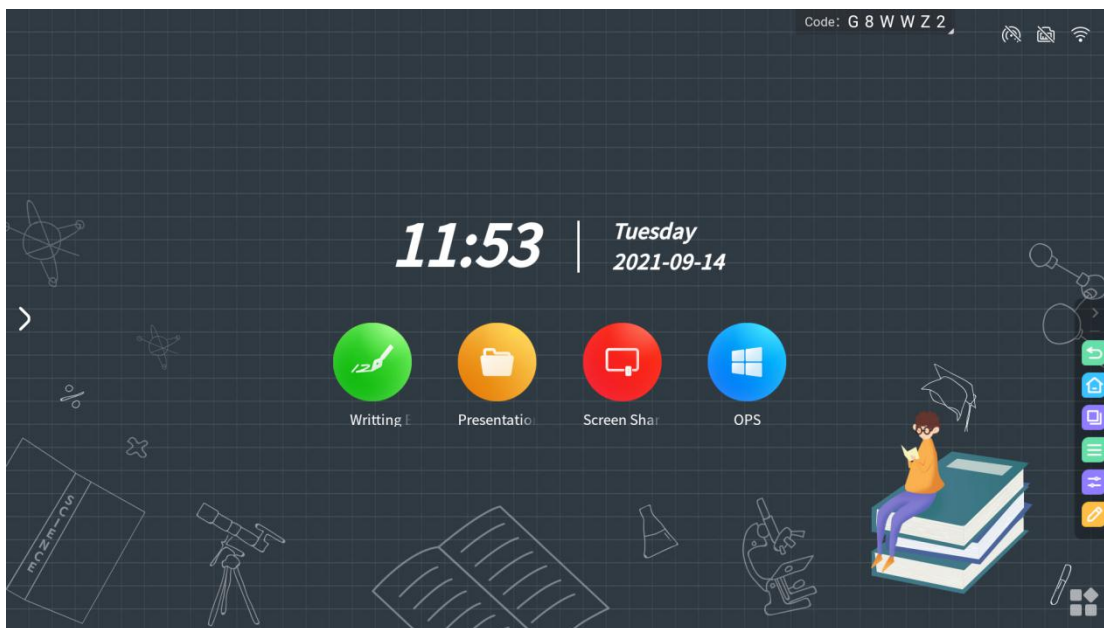
- How to annotate?

Function entry

Comments can be entered in the following scenarios:

Scenario 1: When the PPT is played locally or through the screen, the comment toolbar will appear. At this time, click the comment button to enter the comment. Note: If some versions of PPT still have a page-turning button after entering the comment, you can realize the comment along the page at this time.

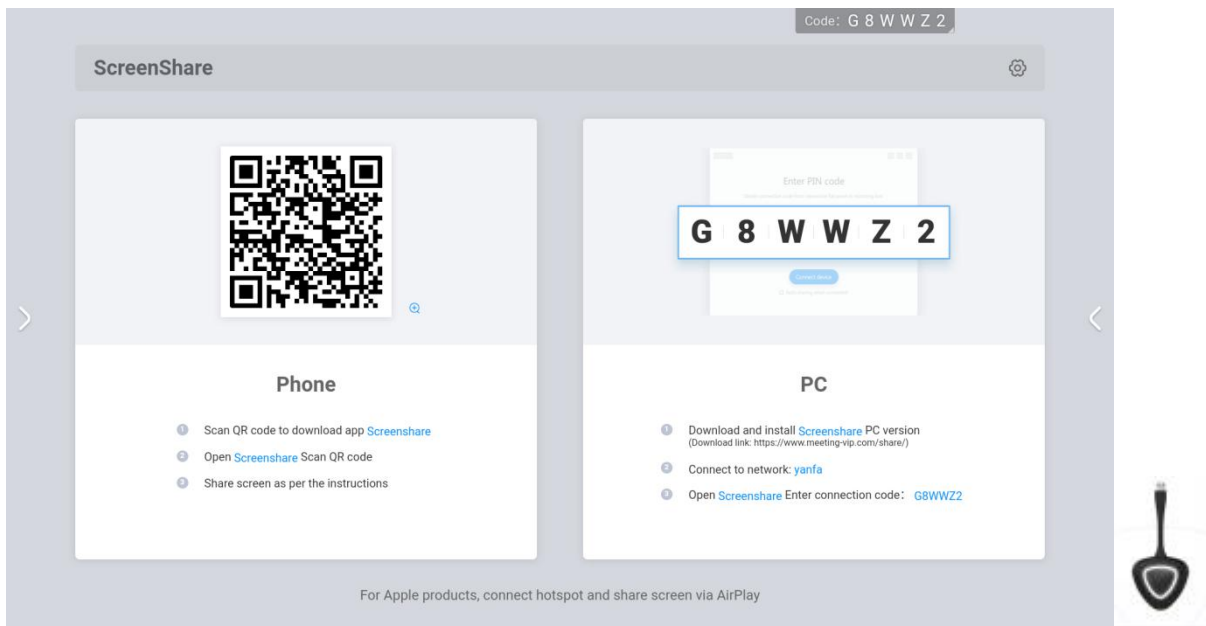
Scenario 2: In other cases, there is a comment button in the sidebar, click to enter the frozen screen comment.



#### 4. Screenshare (Wireless screen transmission)

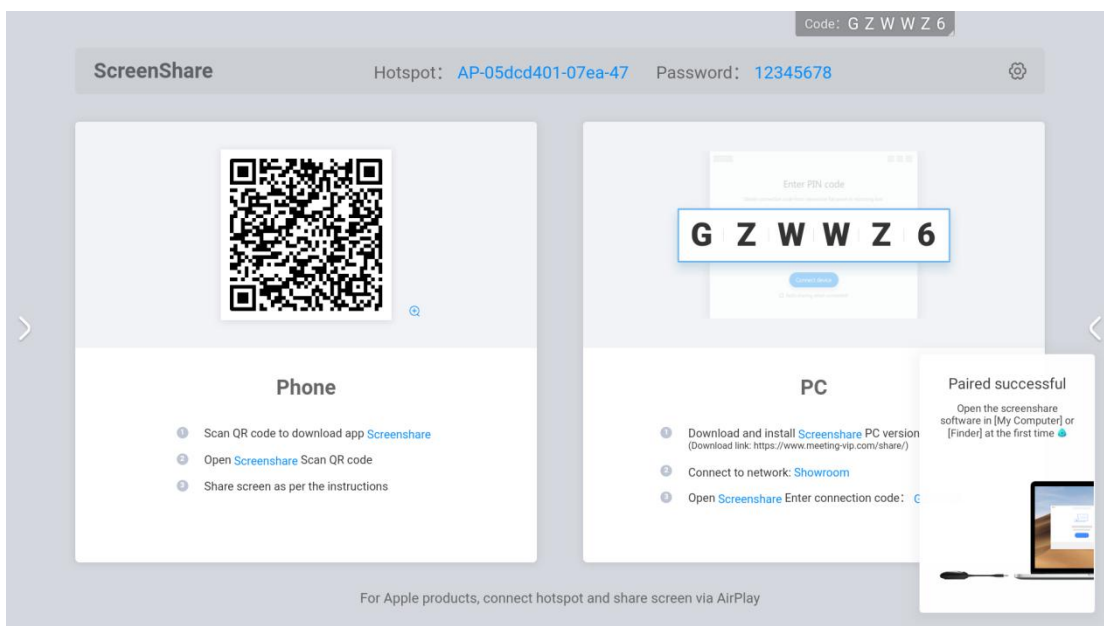
- What is wireless screen transmission?

Wireless screen transmission can project the screens of laptops, mobile phones and other devices to the interactive flat panel and show it to the audience, without use any wires to connect to the interactive flat panel.



The wireless sharing device and the interactive flat panel once are successfully paired.

\*Note: For screen transfers that have been paired successfully, there is no need to pair them again. Please skip this step.



Connect the wireless sharing device to the USB port of the laptop (some computers with only Type-C interface need to use a converter)



When using for the first time, Apple computer users should find the application icon in the figure below on the desktop, click to open, and use the program

For Windows computer users, please open my computer, select the CD driver, and manually run "ScreenShare.exe"

When the program is started, the computer will automatically connect to the paired interactive flat panel. The light of the wireless sharing device flashes to indicate that it is connecting, and the screen transmitter light is always on, indicating that the connection is successful and it is in a shareable status.

When the light of the screen is always on, press the screen button to share the screen

Press the wireless projection button again to disconnect the projection and be in a ready status for sharing.

Extended screen projection. Open the screen transfer application on the computer (step 4), you can choose to open the extended screen in the options to transfer the screen, so that the interactive flat panel can be used as the extended screen of the computer to transfer the screen.

● **How to use computer screen transfer assistant software to transfer screen ?**

Please download the "screen transfer assistant" APP on the laptop & computer in advance at this link : (<https://www.meeting-vip.com/share/>)

Find the "Screenshare" APP on the interactive flat panel and open it into its application

Open the screen transfer assistant on the computer, enter the screen transfer code on the interactive flat panel "screenshare" shown, and then click "connect device",

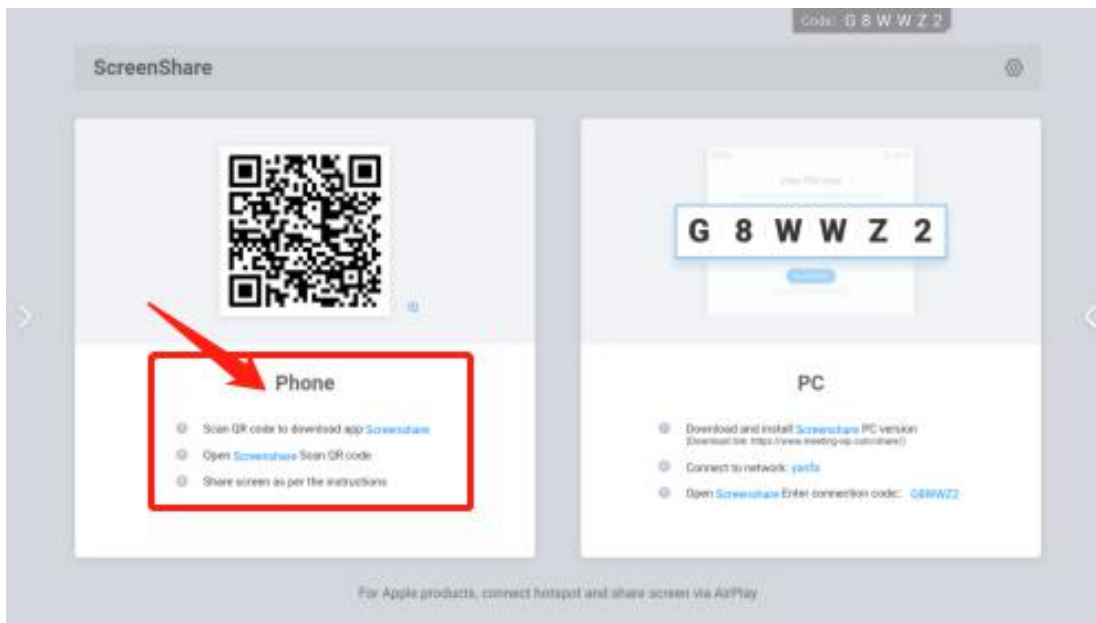
Screen can be transferred



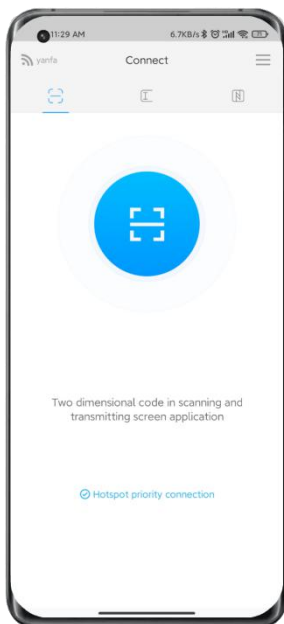
● **How to transfer screen from mobile phone ?**

a. Please download the "screen transfer assistant" APP on the phone in advance at this link: (<https://www.merting-vip.com/share/>) (you can also scan the QR code as shown on the interactive flat panel to download)

b. Open the "Screenshare" APP on the interactive flat panel. You can see the wireless screen transmission operation guide.



c. Use the “screen transfer assistant” on the phone to click the scan code button, scan the QR code on the interactive screen transfer guide to connect



d. If the connection is successful, the following functions can be selected for screen transmission.

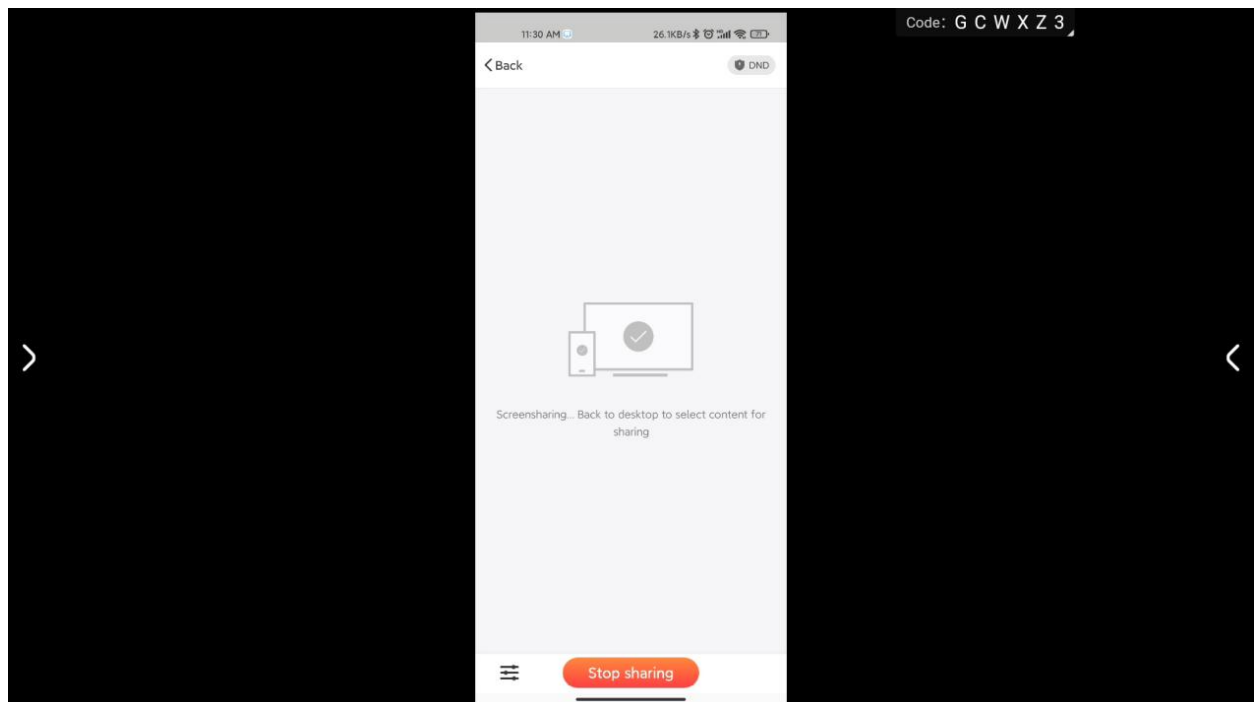
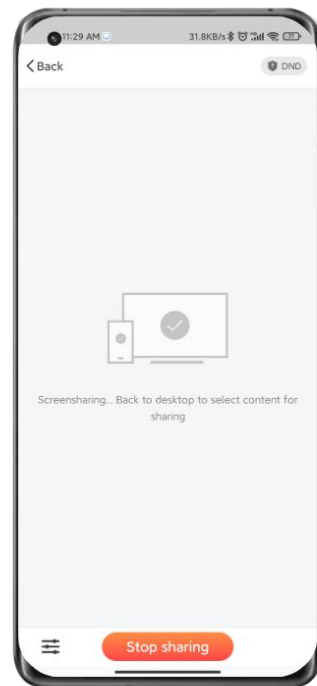
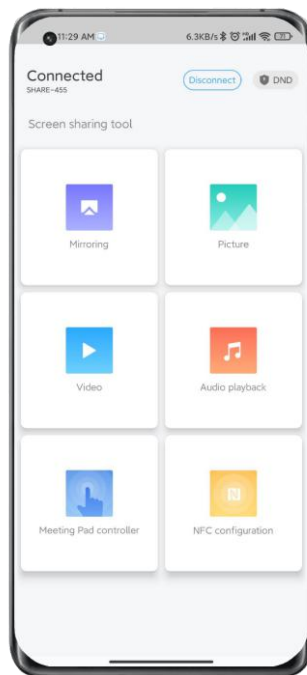
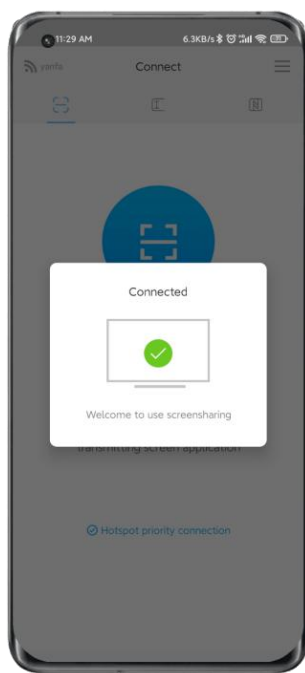
**Screen sharing:** the screen of the mobile phone can be shared to the interactive flat panel for display;

**Picture display:** You can share the pictures on your mobile phone to the IFP for display;

**Video playback:** Share the video on the mobile phone to the IFP for playback;

**Audio playback:** The audio on the mobile phone can be shared to the IFP for playback;

**Meeting pad controller:** You can use your mobile phone to operate the IFP in real time

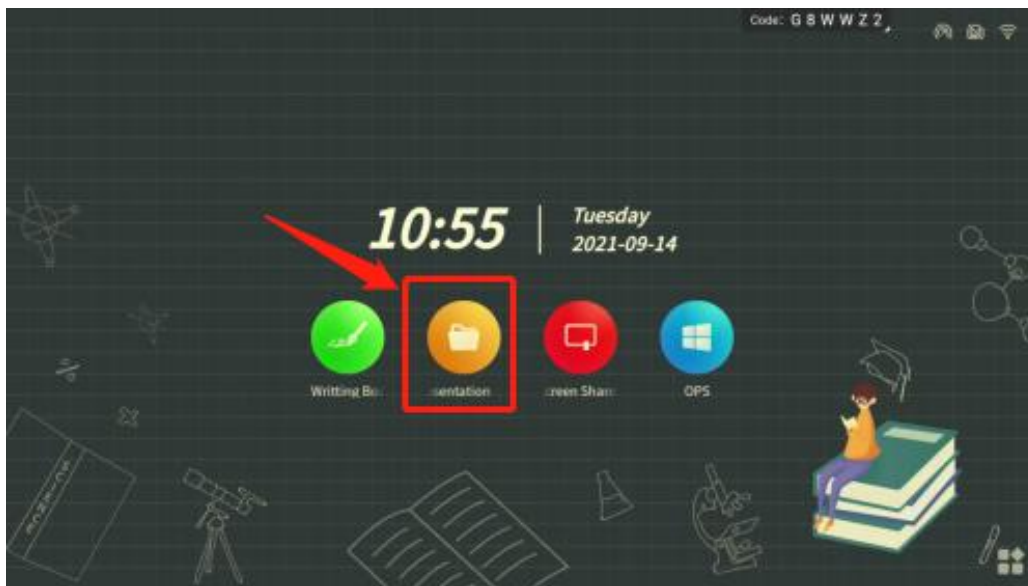


## 5. Presentation

- What is a presentation?

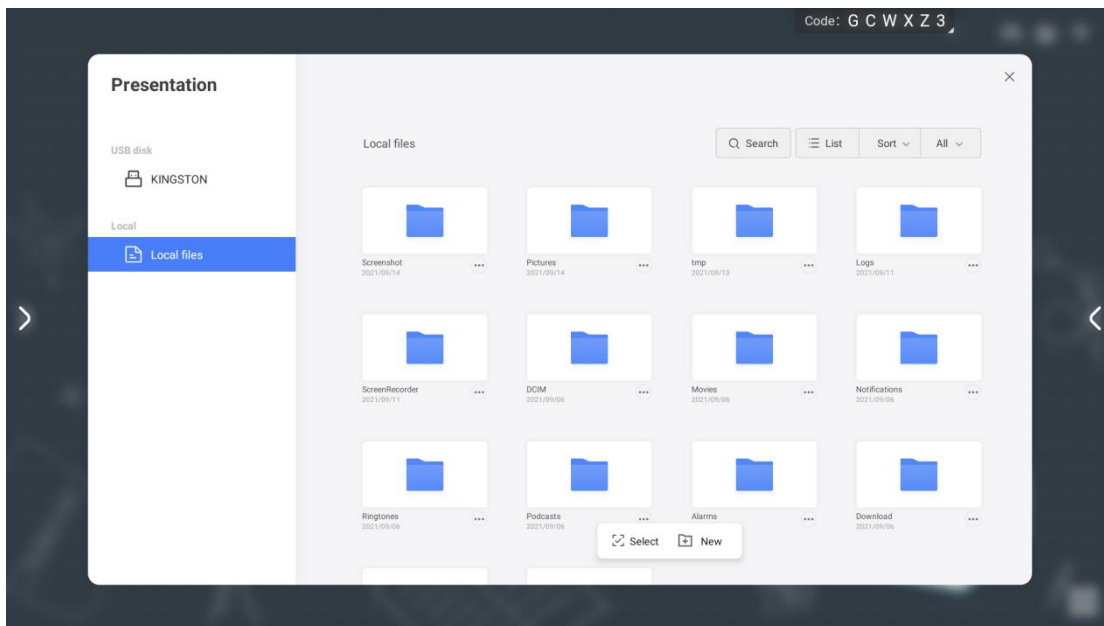
Manuscript presentation is used for local file management, and various files can be opened for content display through the manuscript presentation (the interactive flat panel needs to be pre-installed with a software client that can open the corresponding file type).

A. Click on the "Presentation" icon on the homepage to start the presentation APP

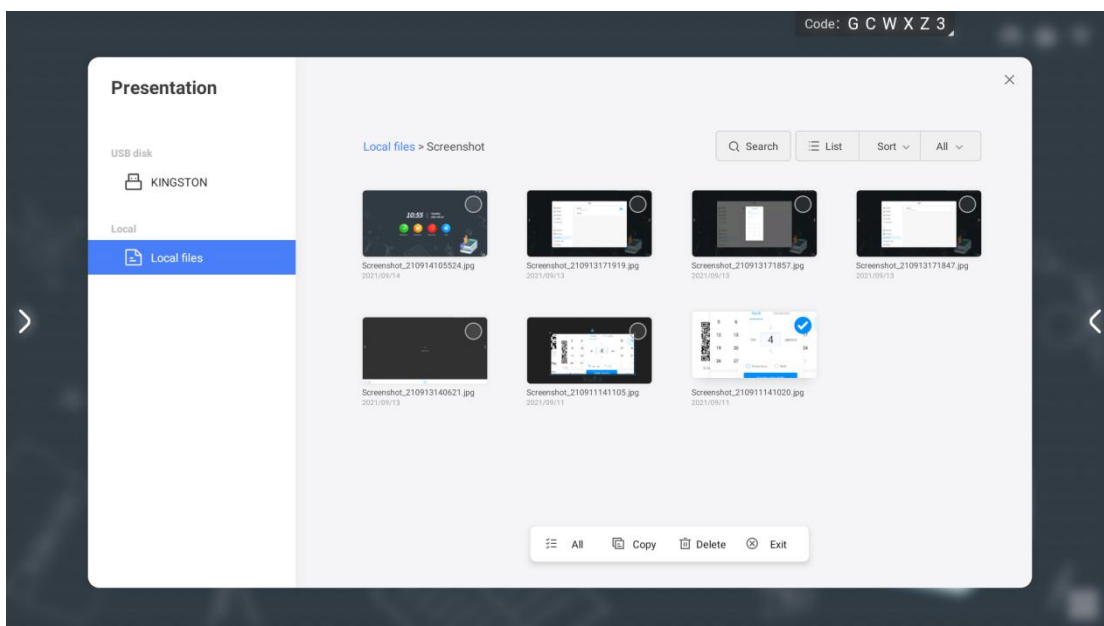


B. When a USB drive (Pendrive) is inserted into the interactive flat panel, the presentation interface will display the drive letter of the USB drive. Click the corresponding drive letter to load the file in the corresponding storage.

C. For the local files in the interactive flat panel, USB drive, and personal folders, you can filter and display the files of the corresponding type by clicking the file type filter button on the interface.



D. Click the menu button on the file list interface to display the floating toolbar, can do the operation as open, share, copy, delete files, select multiple shortcuts, etc.



## 6. Little Widgets

### ●What is a widget?

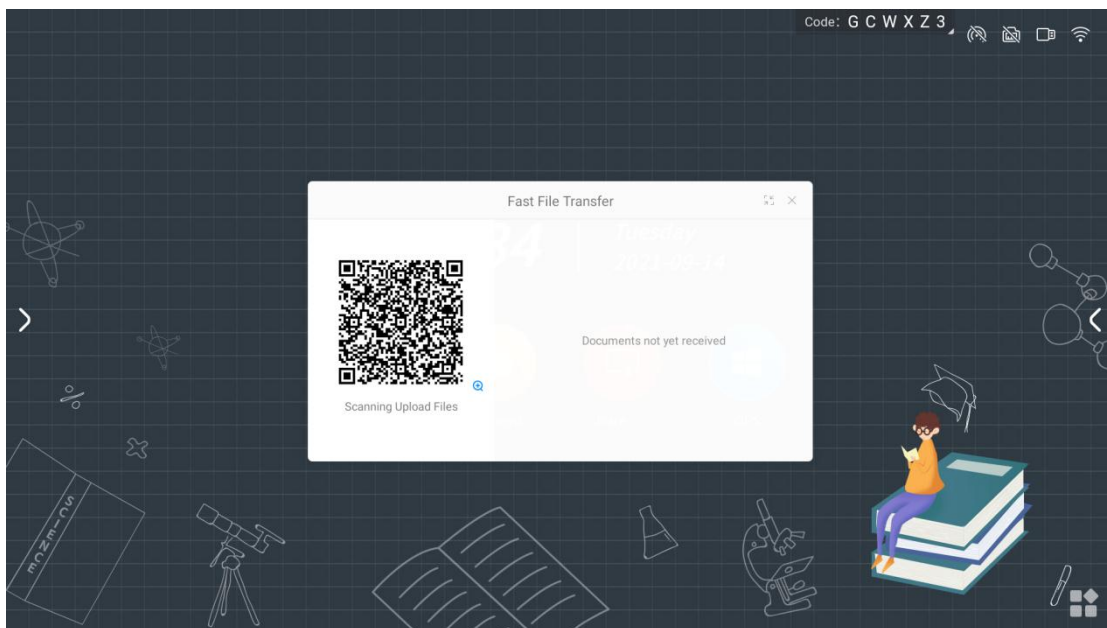
Widget is a quick tool App on the interactive flat panel. It provides convenient functions in various scenarios and assists in solving the requirements of file transfer, voting, screen recording, timing, screenshots, and photos in the conference.



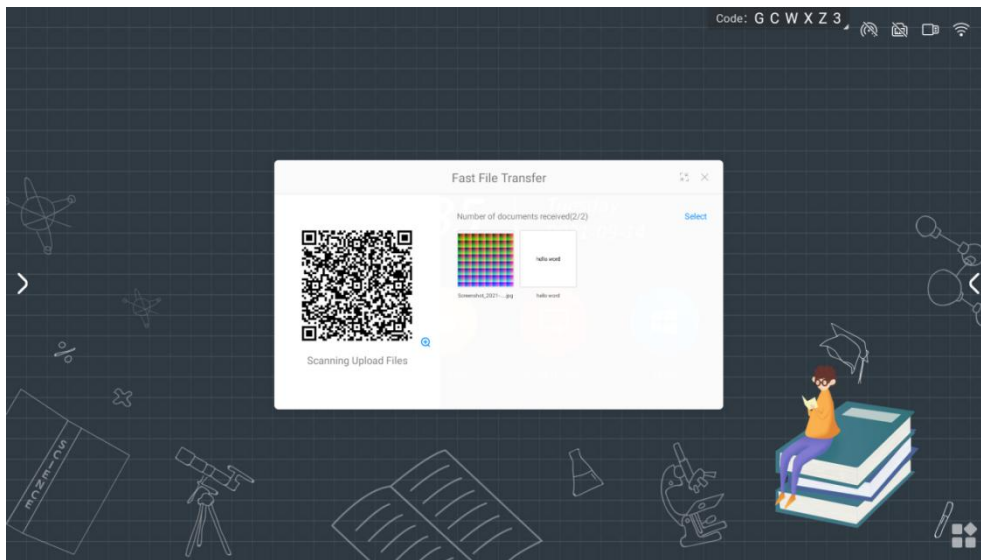
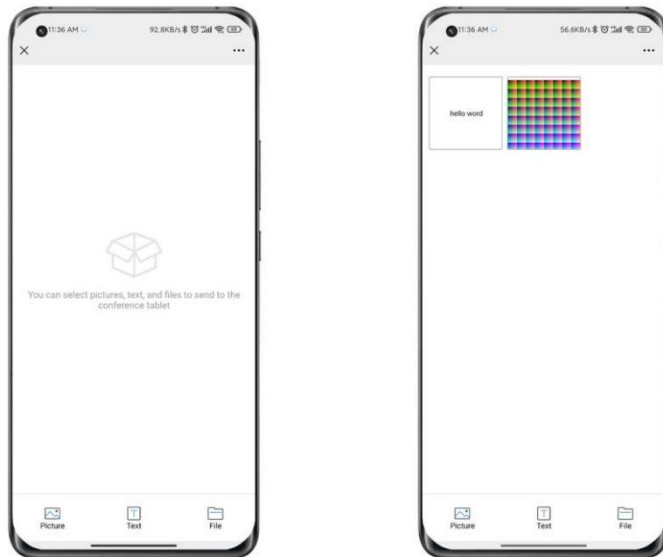


### ● Quick upload widget

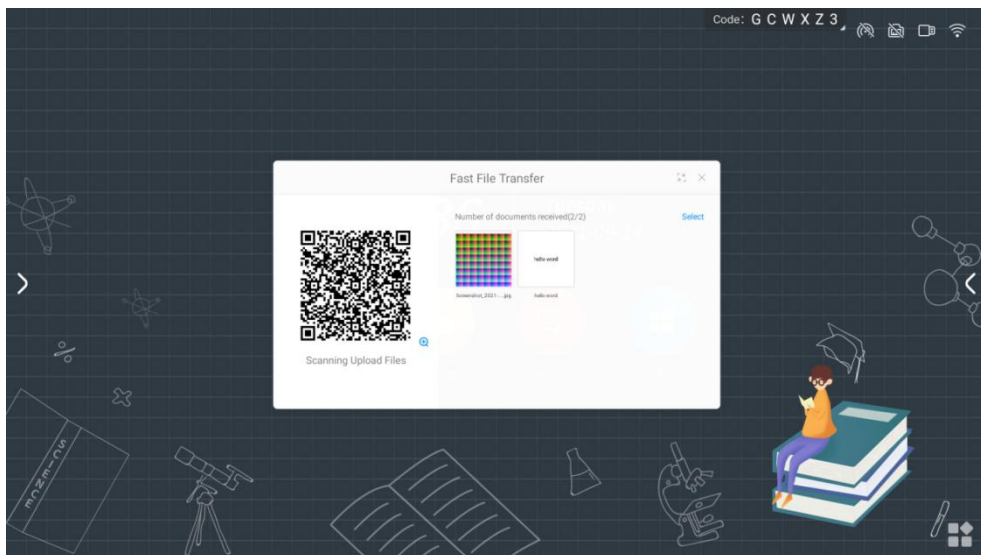
A. Click "Quick File Transfer" in the sidebar to open the quick file transfer widget



B. After the mobile phone scans the code, you can choose to upload pictures, texts, and files on the mobile phone

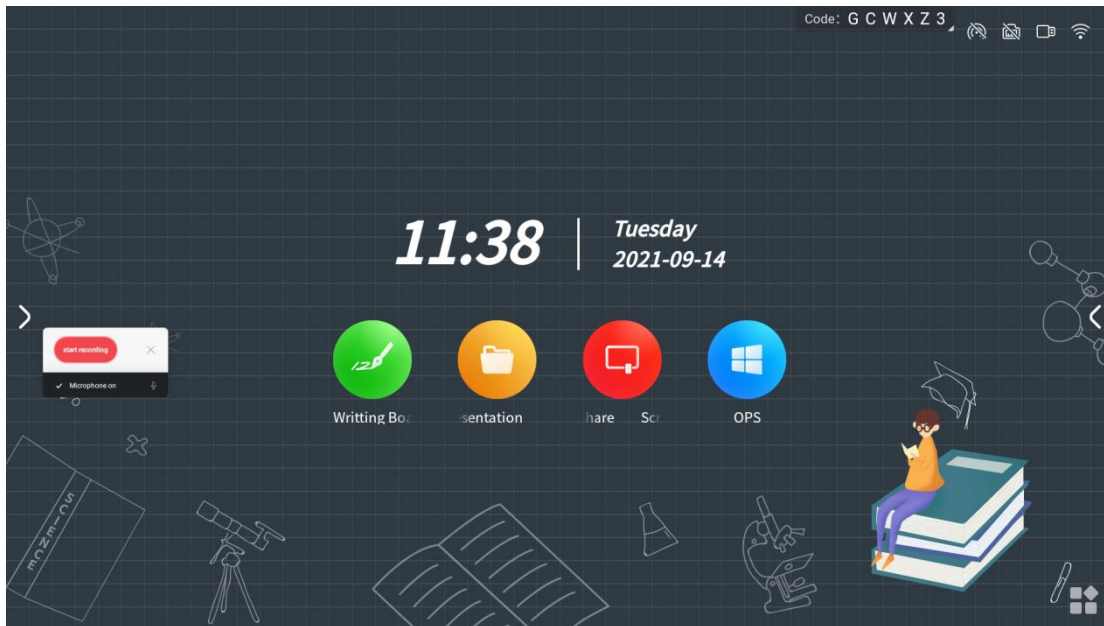


3. Click the file received in the fast transfer on the IFP, and the toolbar will be displayed, and the file can be opened, (picture) inserted into the whiteboard, saved, and deleted.

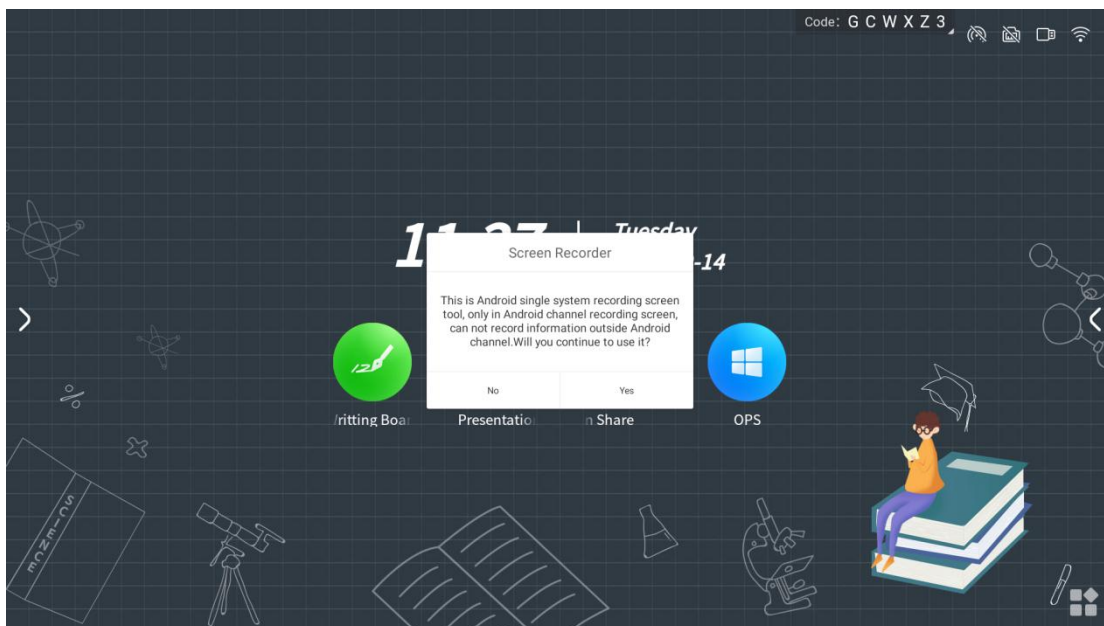


## ● Screen recording widget

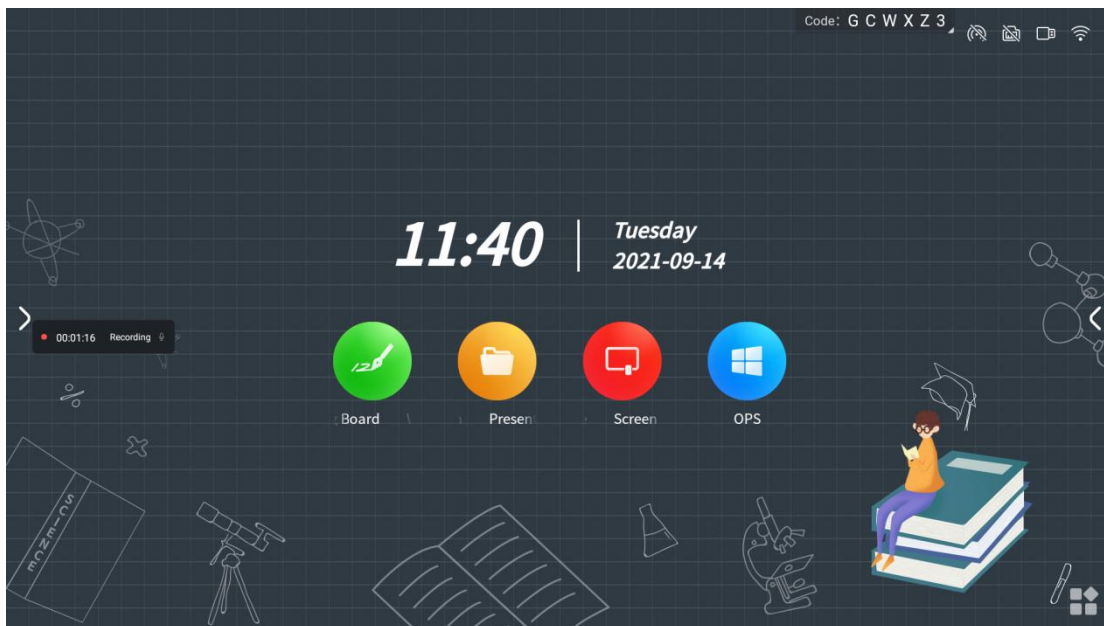
A. Click the "Recording" icon on the side of panel to open the screen recording widget.



B. The screen recording widget only records the screen on the Android channel, and cannot record information outside the Android channel

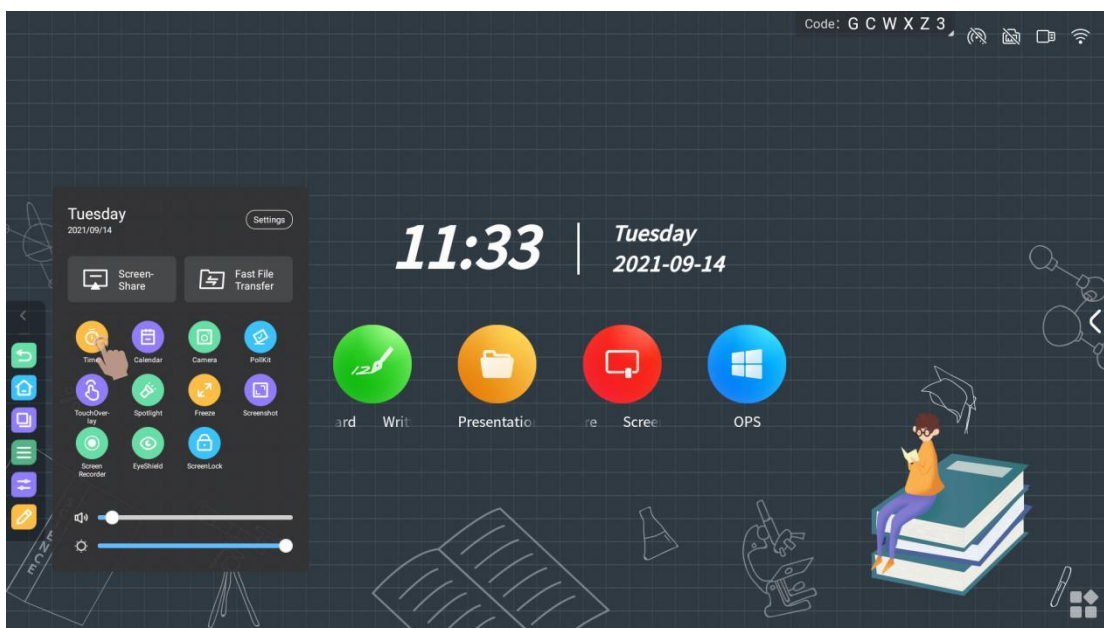


C. Click OK to start screen recording

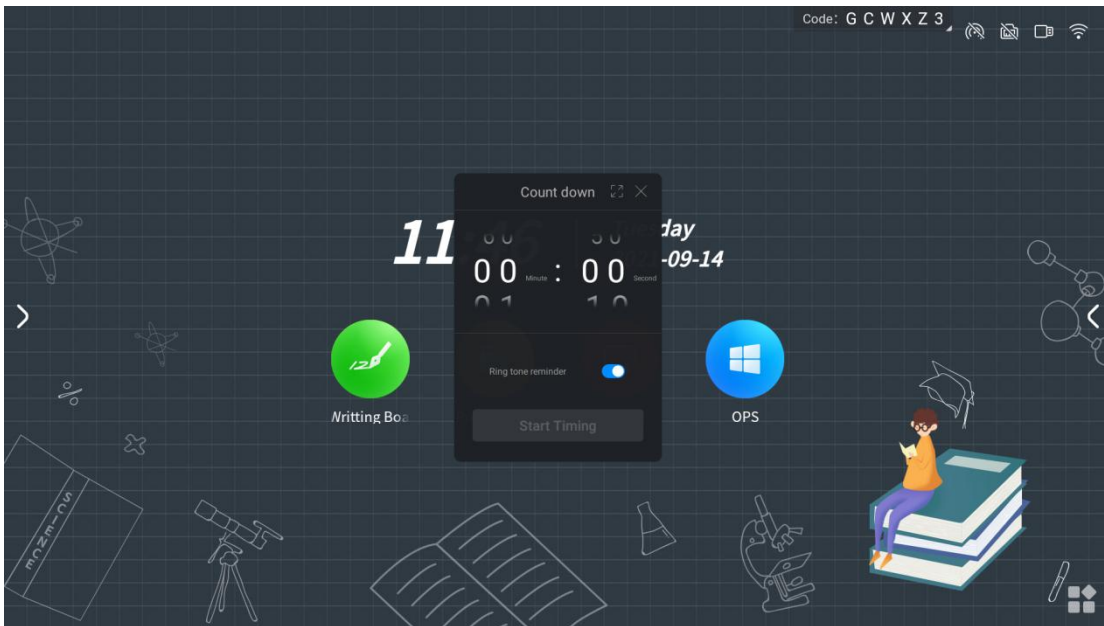


### ●Timing widget

A. Click the "timer" icon on the side of panel to open the timer widget and count down



B. Click the "Start Timing" button to start the countdown according to the selected time



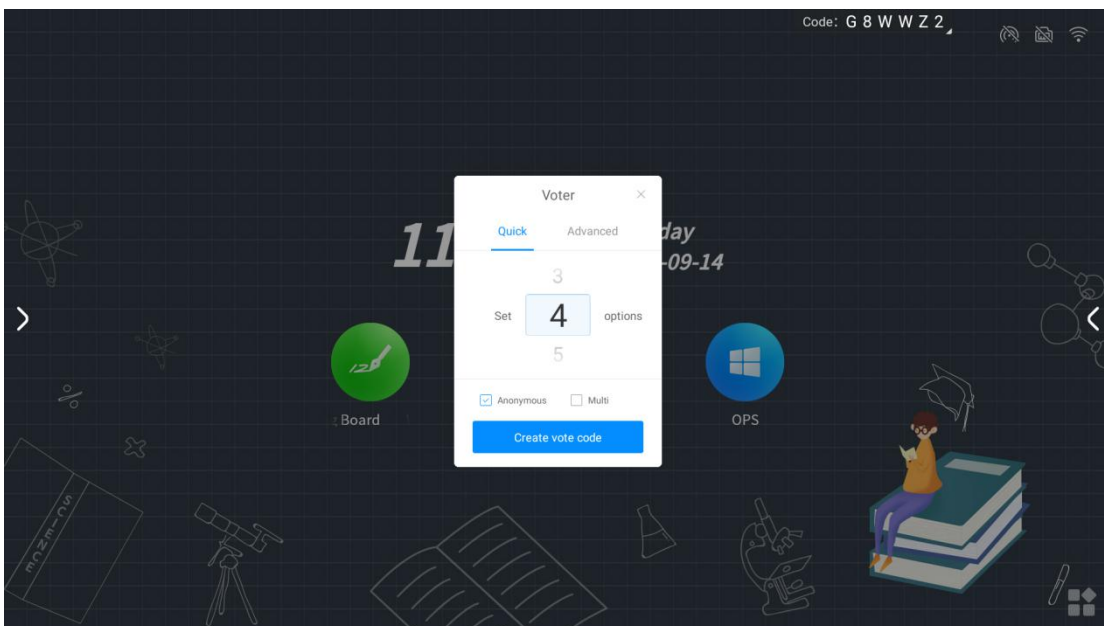
C. Select "Ring reminder", there will be a bell reminder before the countdown ends

D. Select "Timeout calculation", when the countdown ends, it will start counting up and record the timeout time

E. Click "Display in full screen" to display the countdown screen in full screen

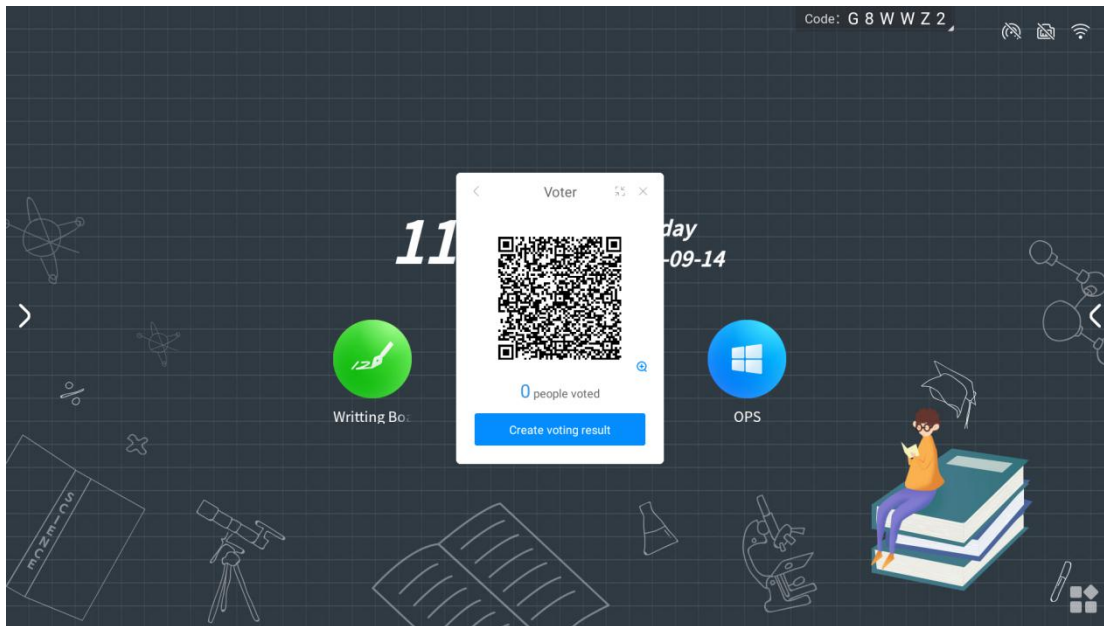
### ● Poll widget

A. Click the "Vote" icon on the side of panel to open the voting widget



B. Click "Generate Voting Code" to immediately generate a voting QR code for the specified number of options. After scanning the code with your mobile phone, you can

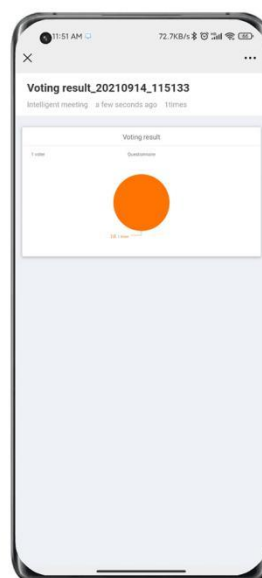
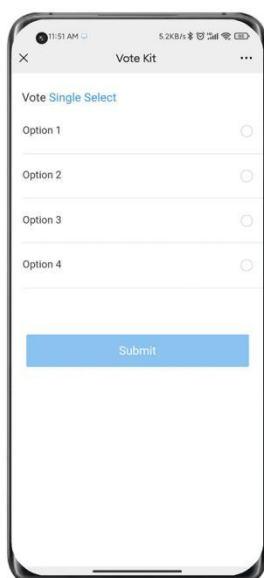
vote for each option



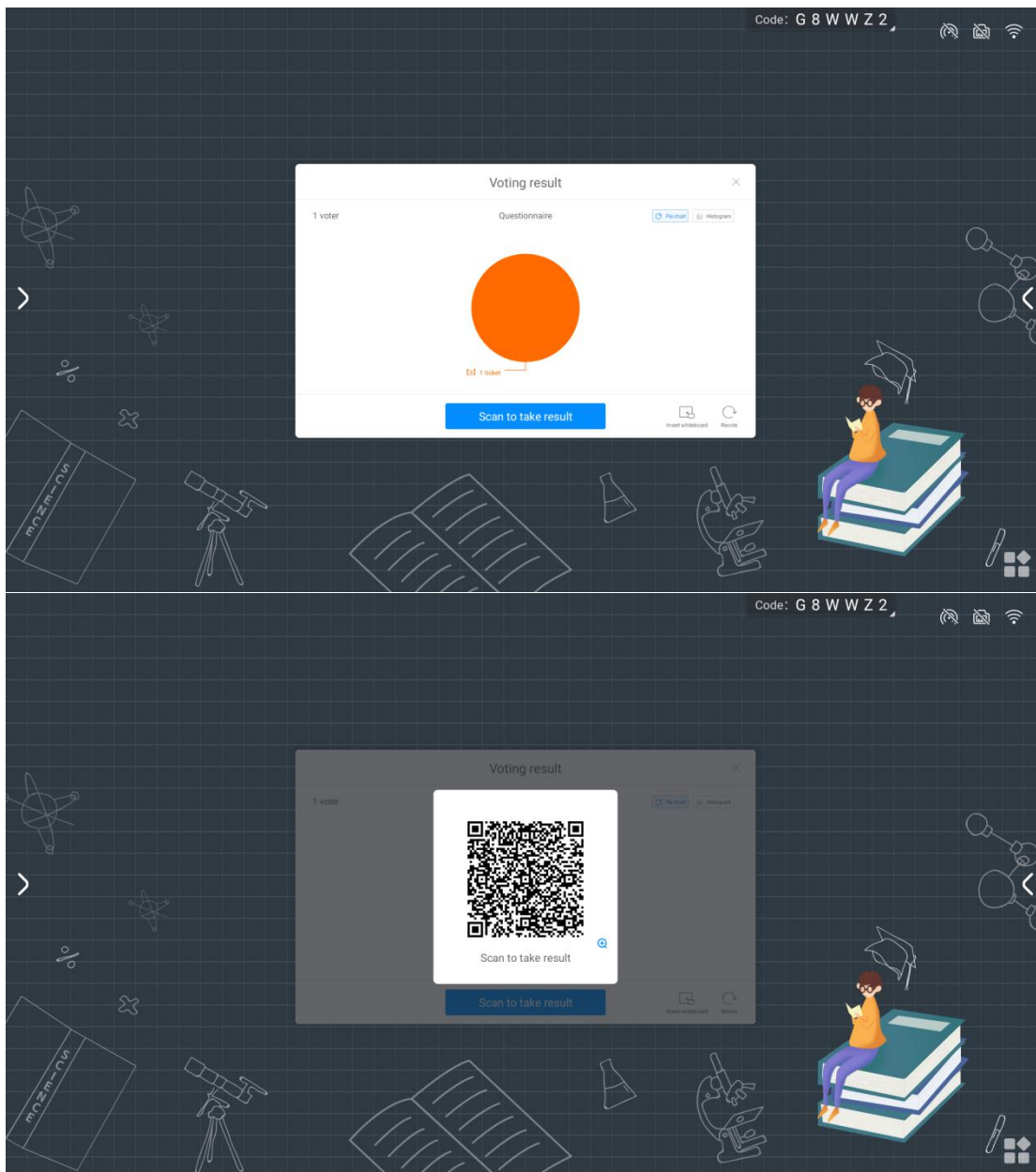
C. Click to select "Anonymous" to vote anonymously

D. Click to select "Multiple Choice" to allow voters to select multiple options

E. Click "Scan code to edit", the poll initiator can edit the questionnaire options on the mobile phone. After clicking to initiate a poll, other participants can scan the QR code on the big board to view the questionnaire

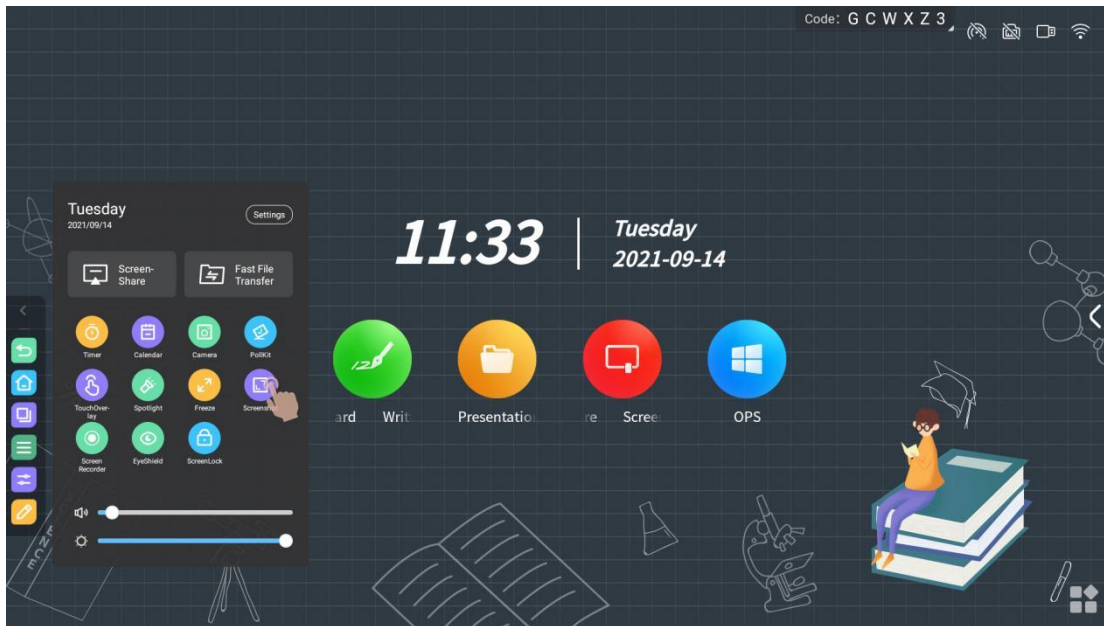


F. The voting result supports histogram and pie chart display. You can insert the voting result into the whiteboard and scan the code to take away.



## ● Screenshot widget

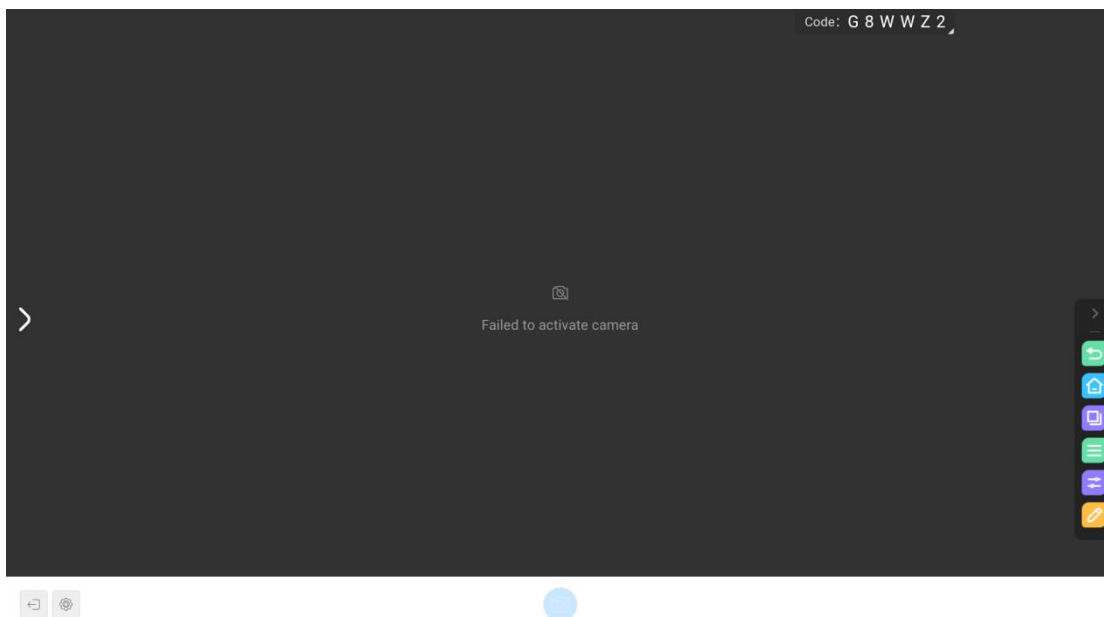
- A. Click the "Screenshot" icon on the pull panel to open the screenshot widget
- B. You can freely adjust the screenshot area, or click the full-screen screenshot button to take a screenshot of the entire screen
- C. Click Import Whiteboard to import screenshots into the whiteboard
- D. Click the Save Local button to save the screenshot image to the local board of Daban



## ● Camera widget

A. Click the "Camera" icon on the side of panel to open the camera widget

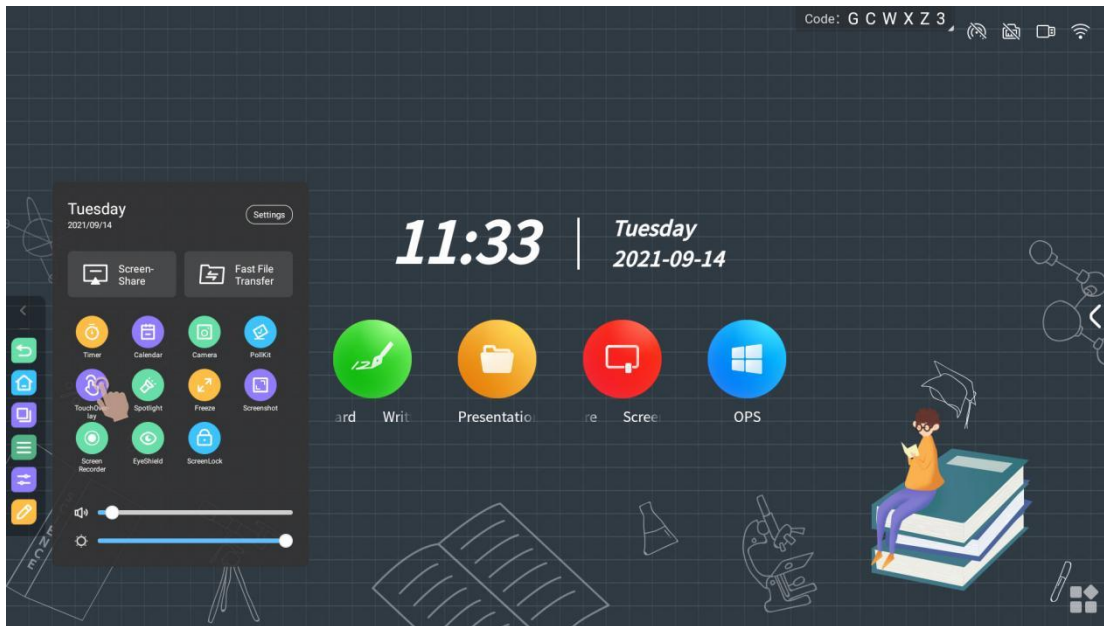
(\*Note: this machine does not have a camera)



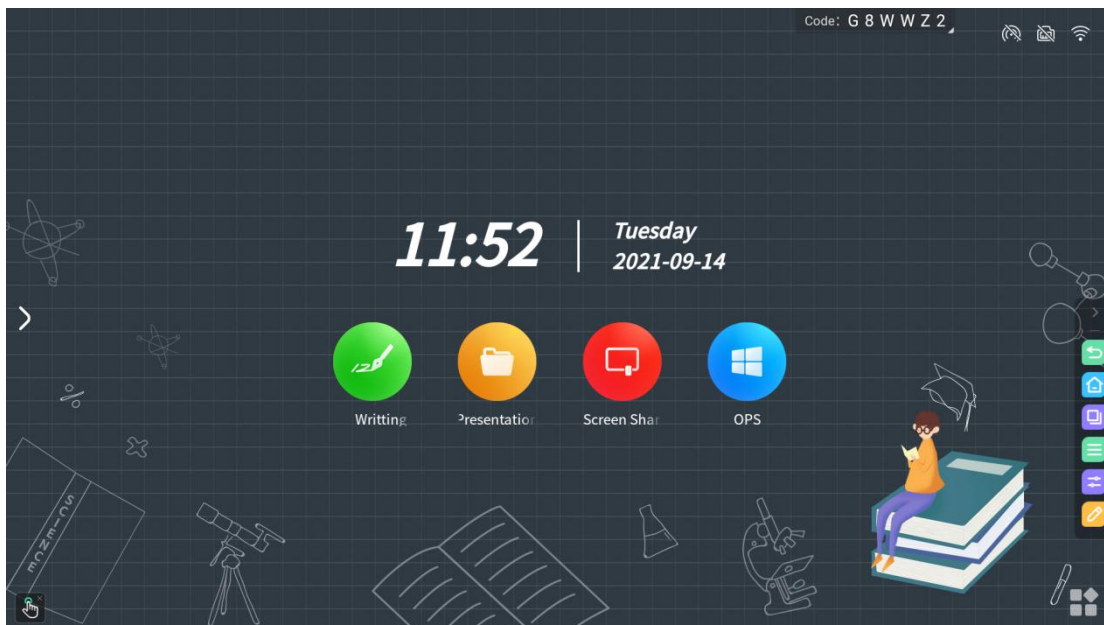
## ● Touch lock widget

A. Click the "touch lock" icon on the side of panel to open the touch lock widget



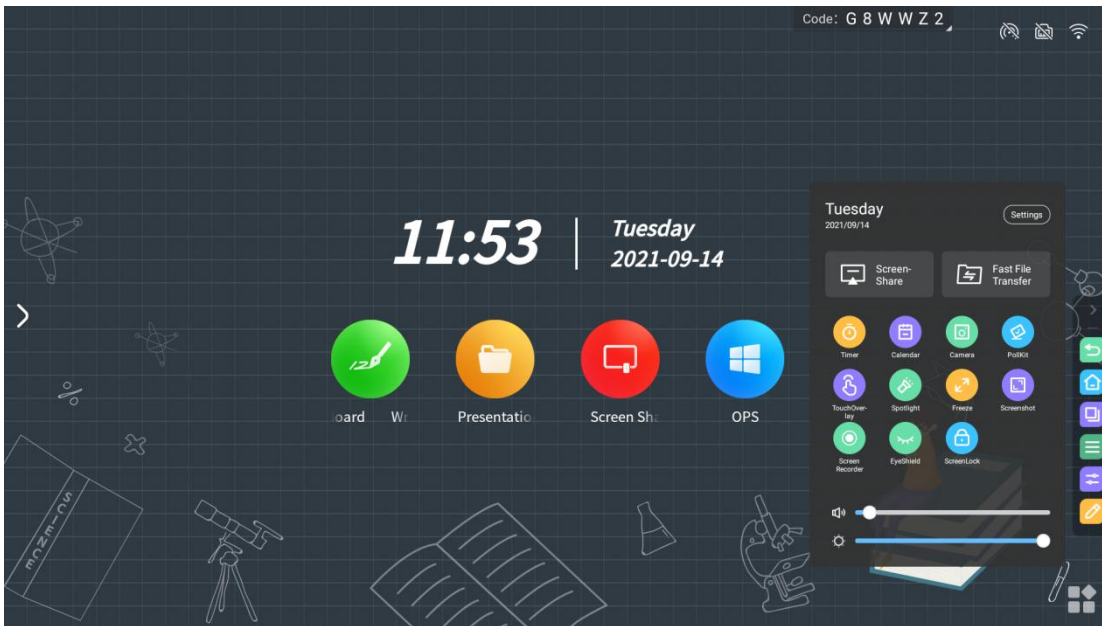


B. Click the touch lock to switch the touch disabled state, as shown in the figure below



### ● Eye protection widget

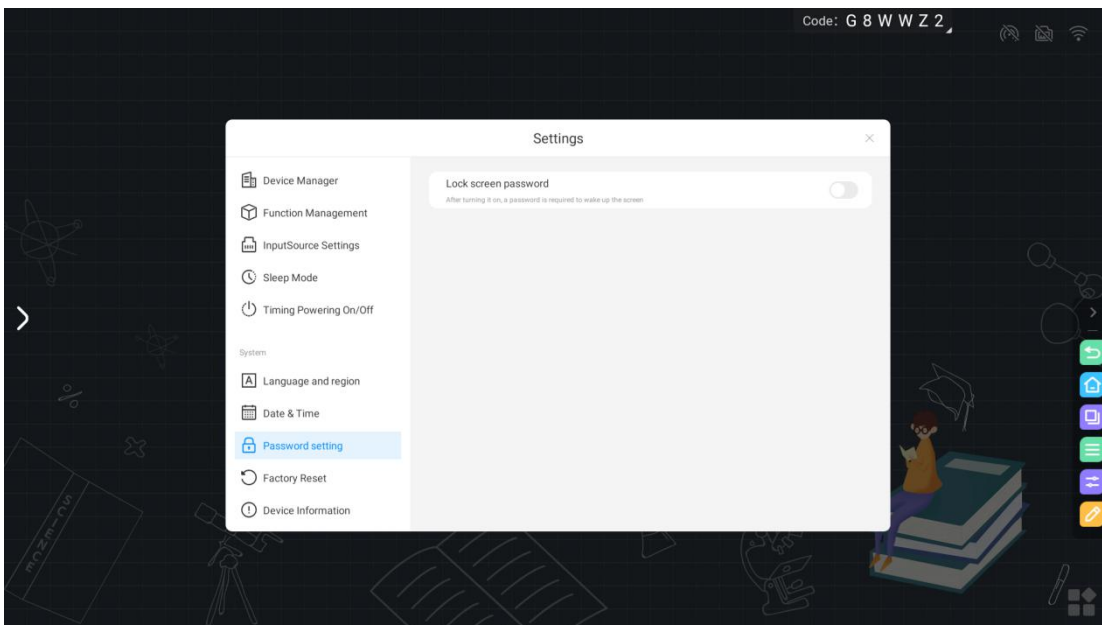
A. Click the "eye protection" icon on the side of panel to open the eye protection tool



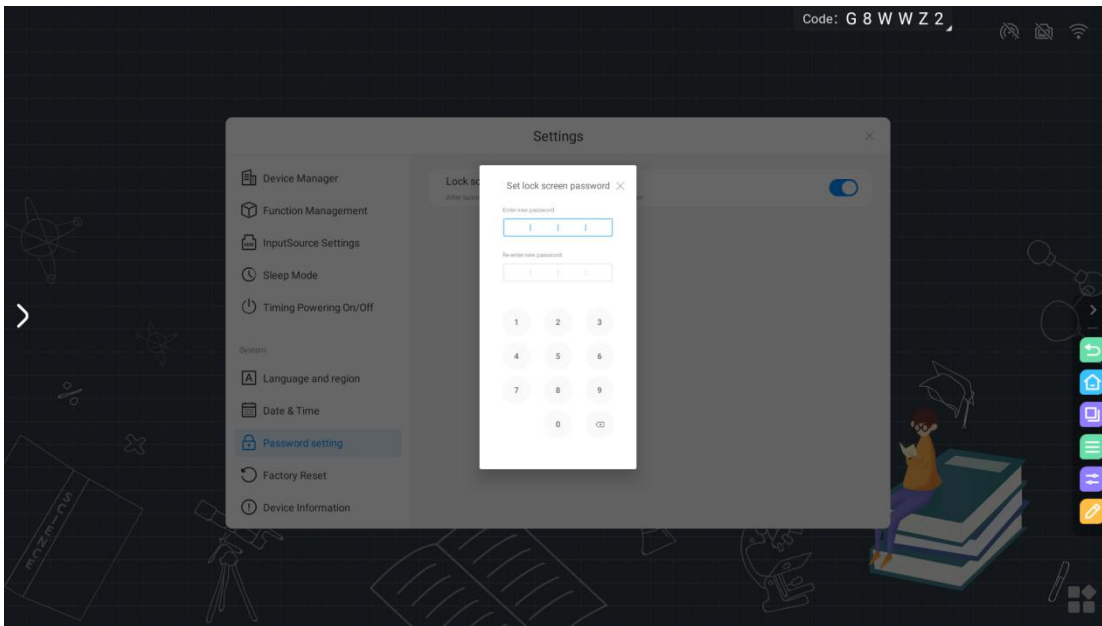
B. The eye protection icon changes from "eyes closed" to "eyes", the screen becomes warmer, enters the eye protection mode, click the "eye protection" icon on the side of panel again to close the eye protection mode, and the image mode returns to the previous state .

### ●Screen lock widget

A. Click the "screen lock" icon on the side of panel to open the screen lock tool



B. Enter the password setting interface

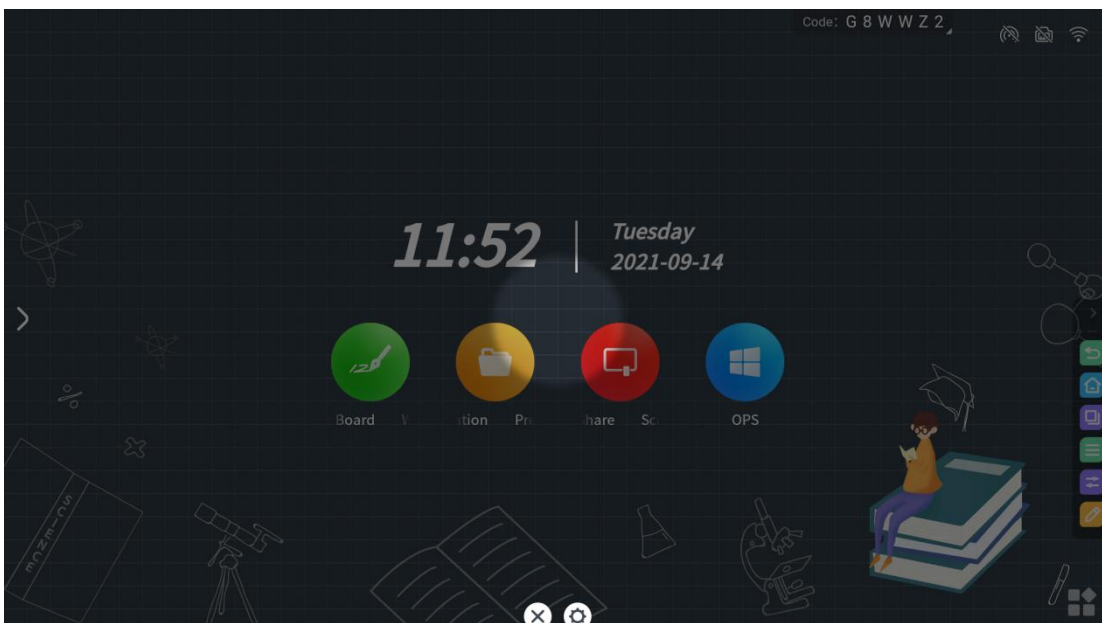


C. After setting the password, you need to enter the correct password every time you wake up on the interactive flat panel.

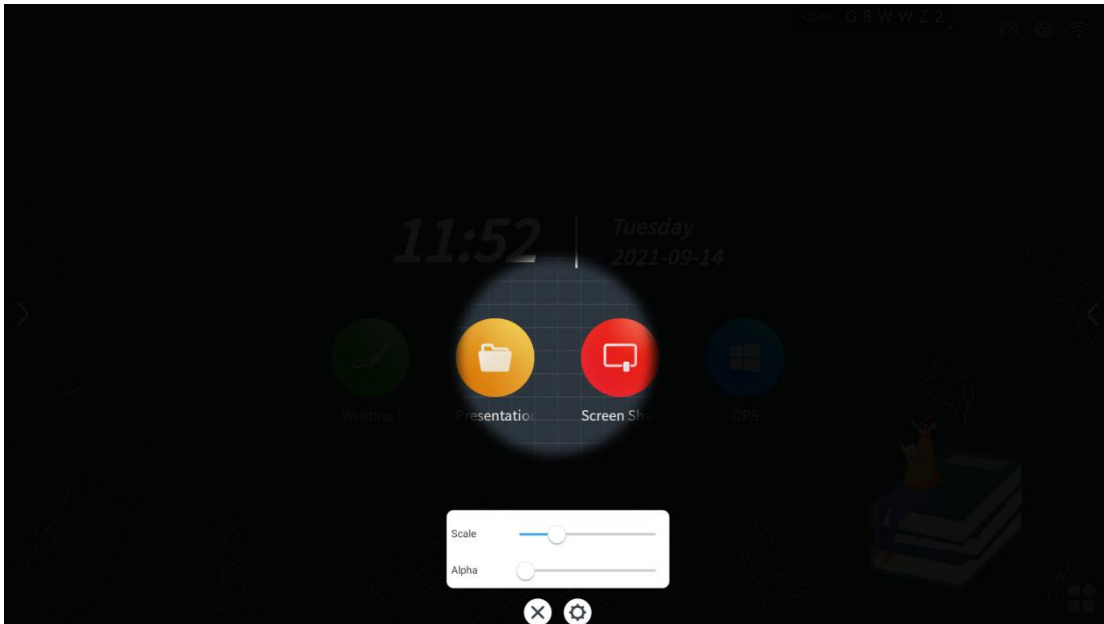
### ● Spotlight widget

A. Click the "Spotlight" icon on the side of panel to open the Spotlight tool.

B. Open the spotlight widget to drag the position of the aperture arbitrarily to help users better focus on key content and shield interference



C. Click the setting part, you can modify the size and transparency of the spotlight's focus aperture

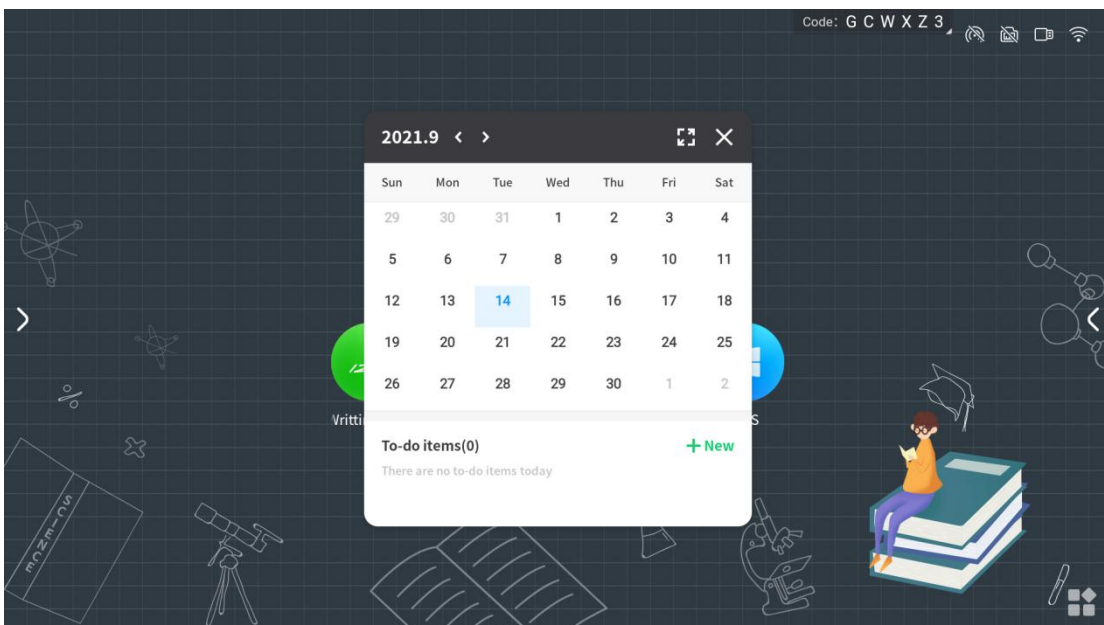


D. Click X to exit the spotlight widget and resume normal display

### ●Calendar widget

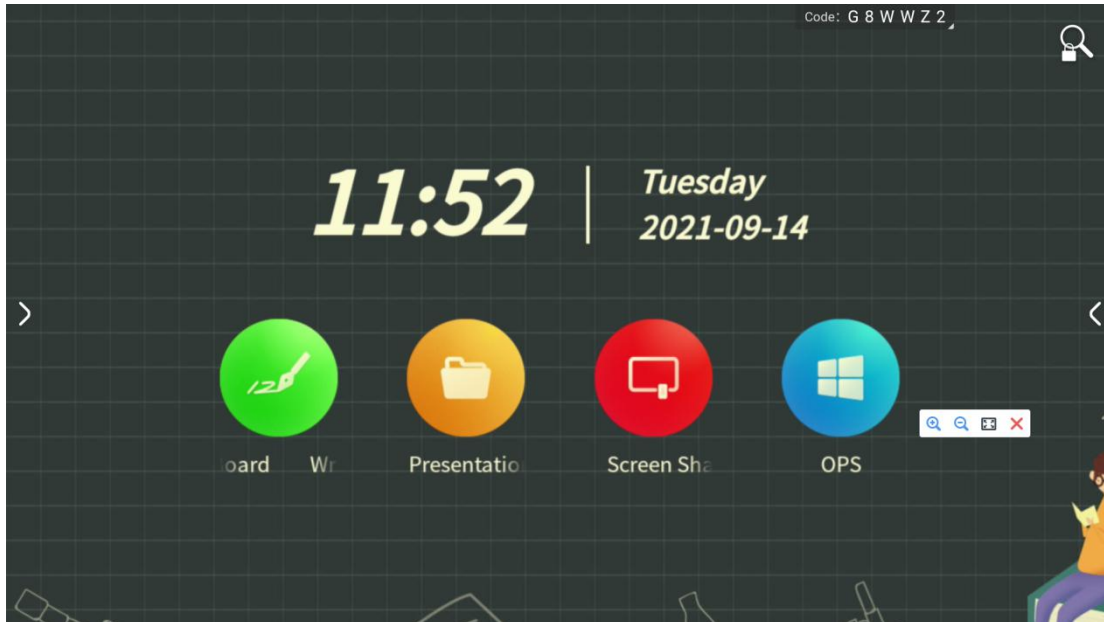
A. Click the "Calendar" icon on the side panel to open the calendar tool.

B. The calendar tool can query year, month, and day, and has the function of adding items to help memorize.



## ●Zoom widget

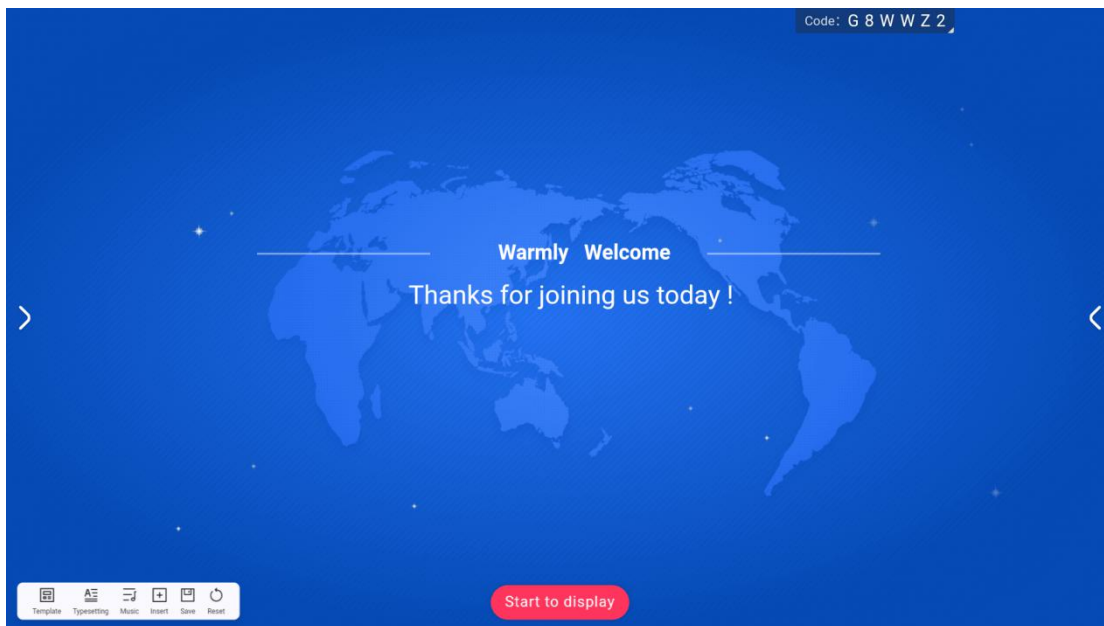
- A. Click the "Zoom" icon on the side of panel to open the zoom tool.
- B. The zoom tool can zoom in and out of the current screen.



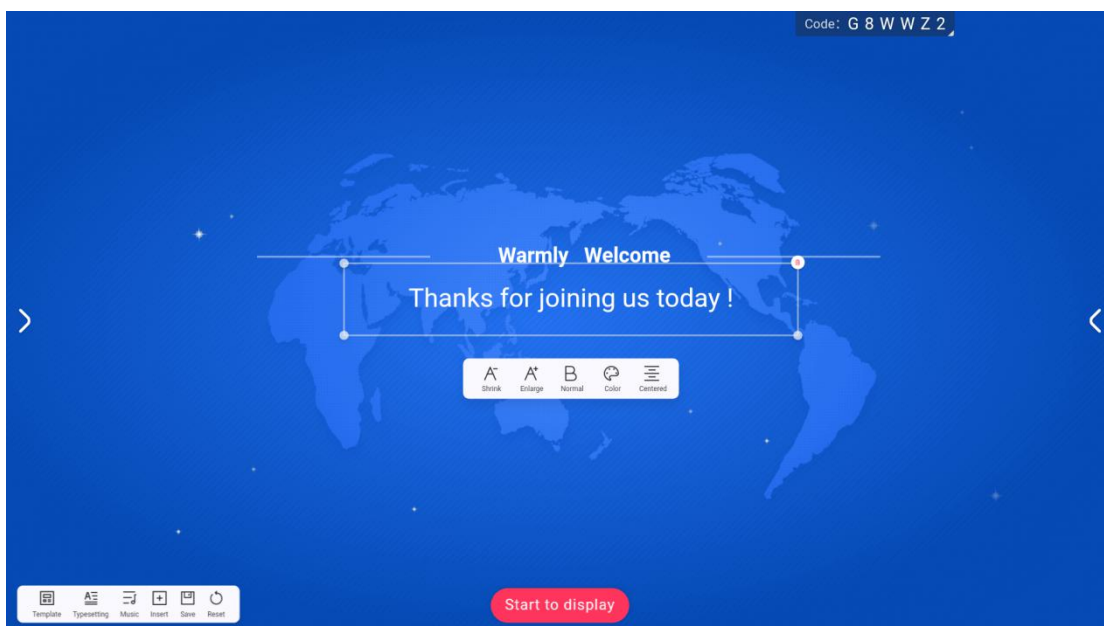
## 7. Welcome speech

### ●What is welcome ?

- A. Use the welcome message to turn the big board into a welcome display screen
- B. Swipe right on the homepage to enter the "Welcome Screen"
- C. Interface introduction: The picture below is the web version of the welcome interface theme, which contains the following elements: background image, welcome copy, start display, toolbar



D. Edit the display content: Click the text on the main interface, and the editing toolbar will appear.



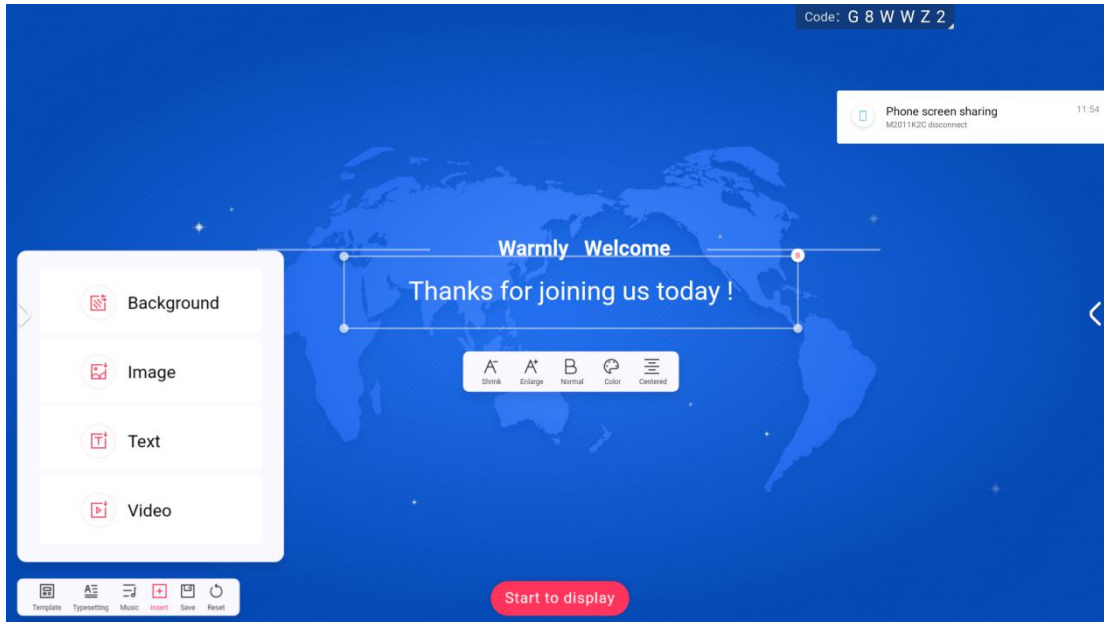
E. Click the "zoom out" and "zoom in" buttons to control the reduction and enlargement of the font size;

F. Click the B button to control the bolding and cancel the bolding of the text;

G. Click the color button to pop up the color selection bullet box to select the text color;

H. Click the button on the rightmost side of the toolbar to switch between centering, left-aligning, and right-aligning; (1) Press and hold the small dot of the text box to drag and

change the size of the text box; (2) Click the text box Press the delete button in the upper right corner to delete the text box; (3) Press and hold any position of the text box, and drag to move the position of the text box;



I. Click the insert button, you can choose to insert the elements of the current welcome interface;

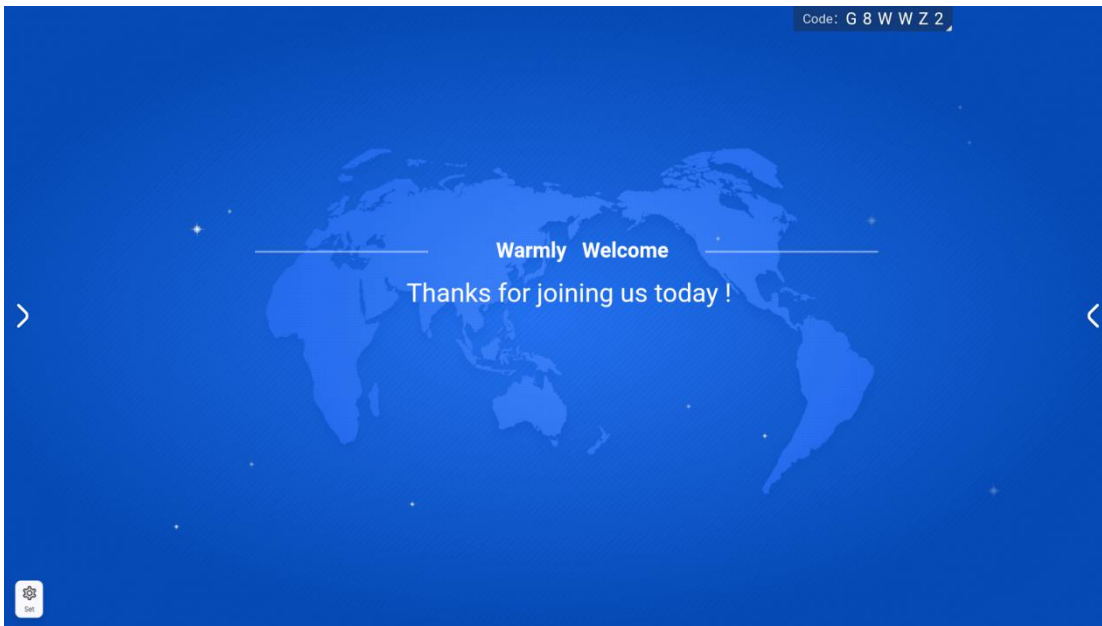
J. Click the template button to select an alternative welcome interface template:

K. Click the music button to insert the alternative or local audio file into the welcome interface;

L. Click the reset button to reset the welcome interface to its initial state;

M. Display of results

After modifying the welcome interface elements, click the start display button on the main interface to enter the full-screen display status.

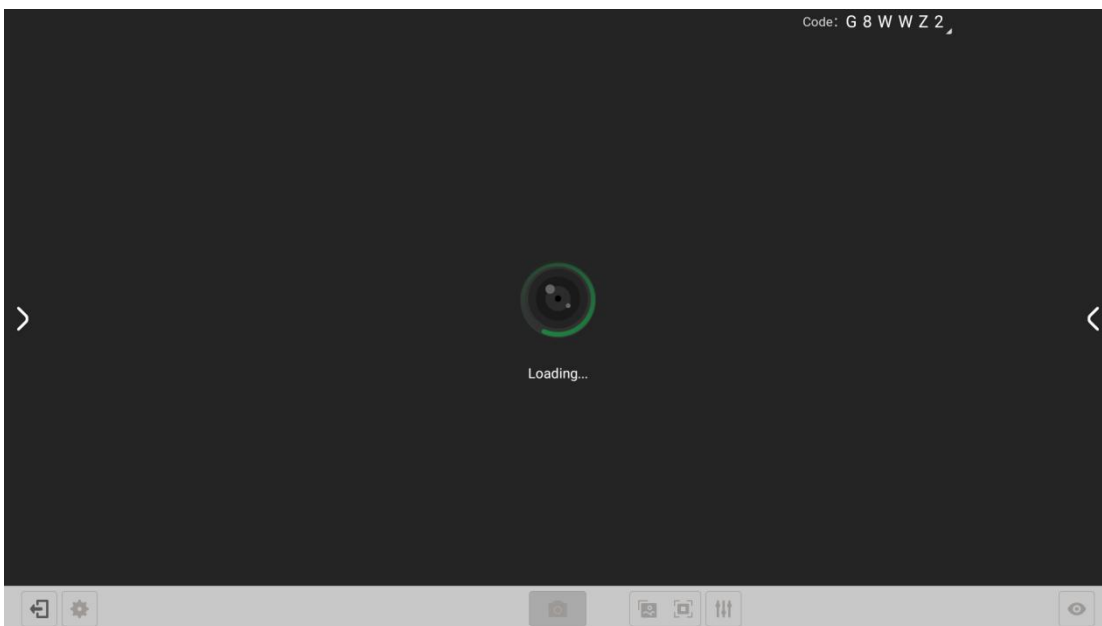


## 8. Video booth

● What is a video booth?

A. The video booth is mainly used for large-scale picture display, with built-in camera.

B. Open more applications and click "Video Booth" to get the video booth



C. Picture display function

Need to take pictures to import pictures, support multiple camera resolutions for optional, and can display multiple pictures in one split screen (\*Note: this machine does not have a camera, and an external camera is required)